



02-06-2025

# **CASE TWO: Map of Evidence and Gap Maps relating to Sustainable Development Goals**

**Nina Dela Cruz**

Center for Evidence-based Social Science  
Lanzhou University

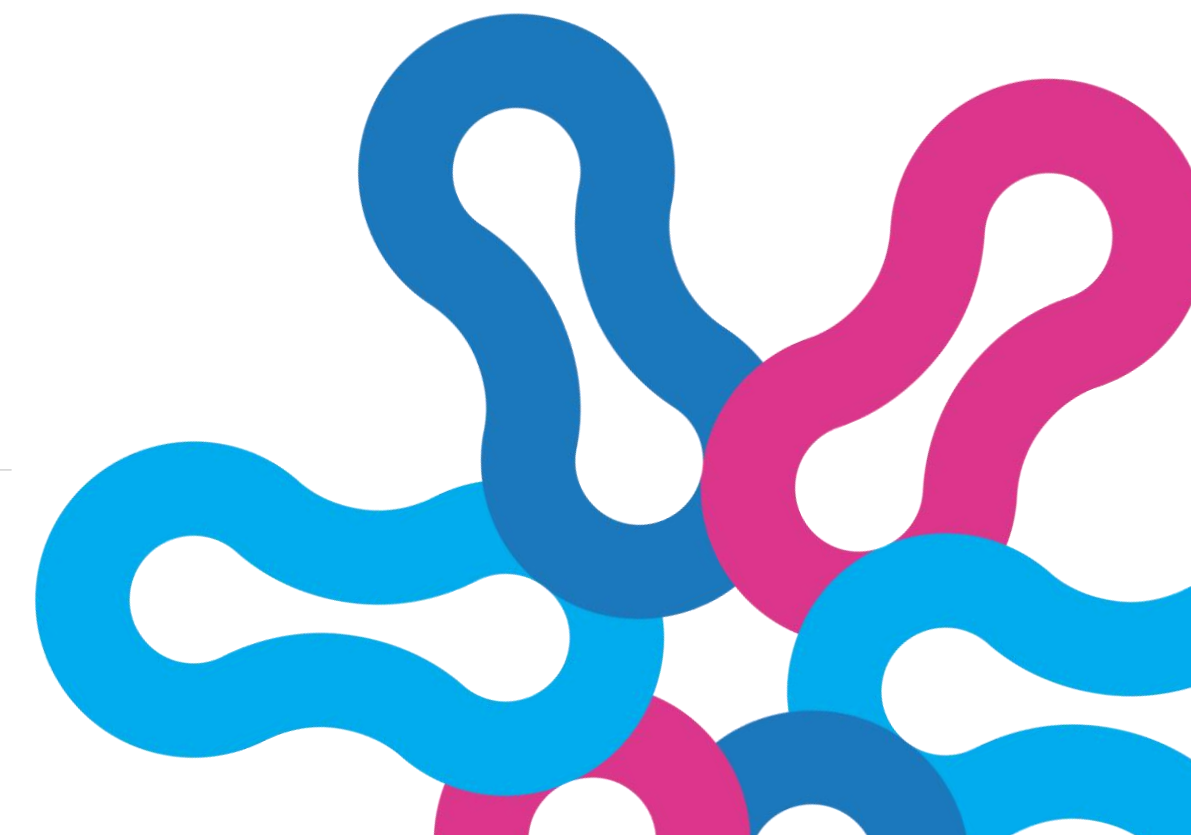
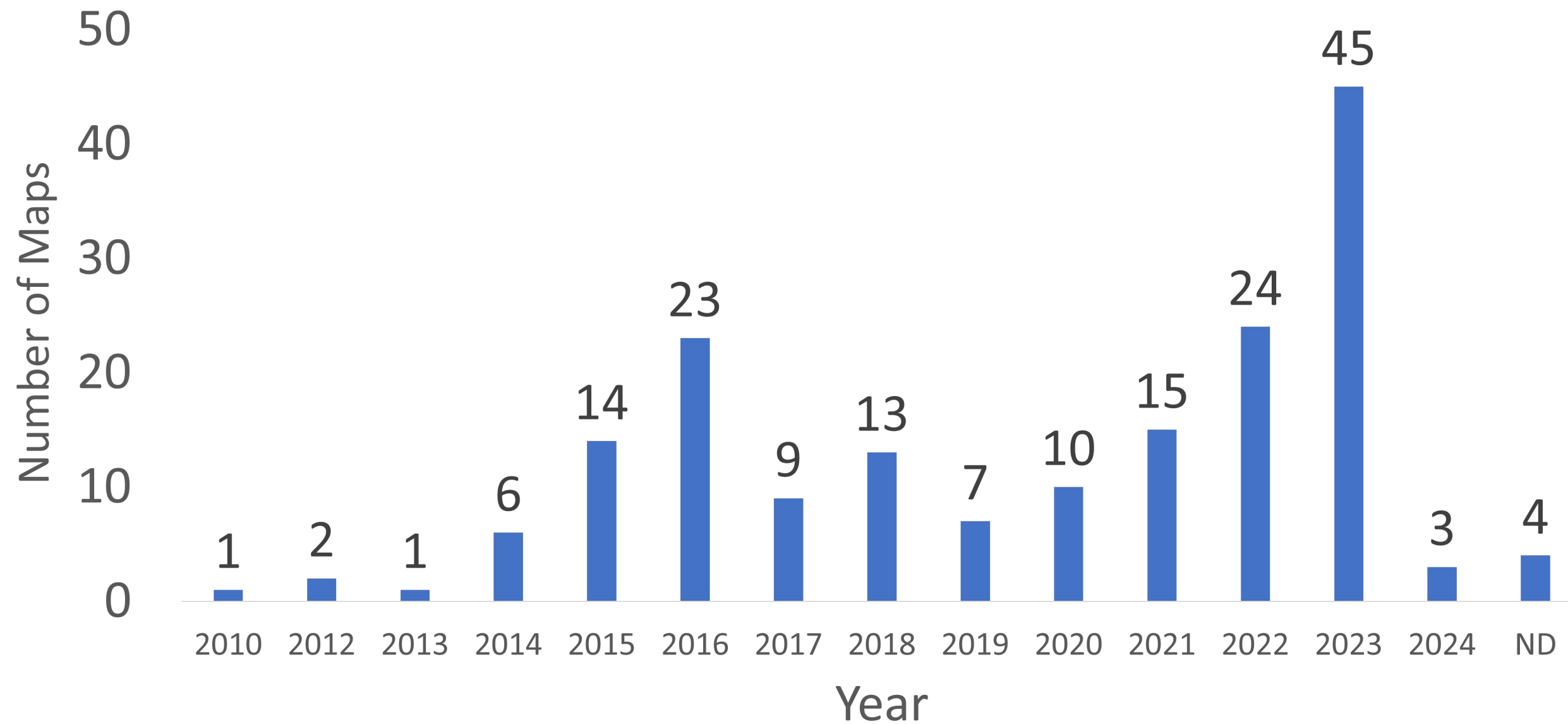
# Evidence and Gap Maps

- A systematic presentation of all available, relevant evidence for a particular sector or sub-sector
- Its purpose is to synthesize existing evidence and identify gaps to inform decision-making
- EGMs are strategic approach to understanding the research landscape related to SDGs.



**There is increasing attention and resources dedicated to produce maps, with 2023 marking a notable surge.**

EGMs by Year of Publication





# SUSTAINABLE DEVELOPMENT GOALS




Mapping evidence for SDGs can help identify areas where more research is needed, support evidence-based decision-making, and direct resources toward the most pressing gaps.



# Objectives of the Map of Maps

- It aims to present a matrix of interventions across various sectors (rows) and the 17 SDGs as outcome domains (columns)
- an update of the previous report, "A Map of Evidence Relating to Sustainable Development in Low- and Middle- Income Countries"
- Identify and summarize existing evidence and thematic gaps, and provide access to maps through an interactive platform



## A Map of Evidence Maps Relating to Sustainable Development in Low- and Middle-Income Countries Evidence Gap Map Report

Daniel Phillips<sup>1</sup>, Christopher Coffey<sup>1</sup>, Stergiani Tsoli<sup>1</sup>, Jennifer Stevenson<sup>1</sup>, Hugh Waddington<sup>1</sup>, John Evers<sup>1</sup>, Howard White<sup>2</sup>, Birte Snilstveit<sup>1</sup>

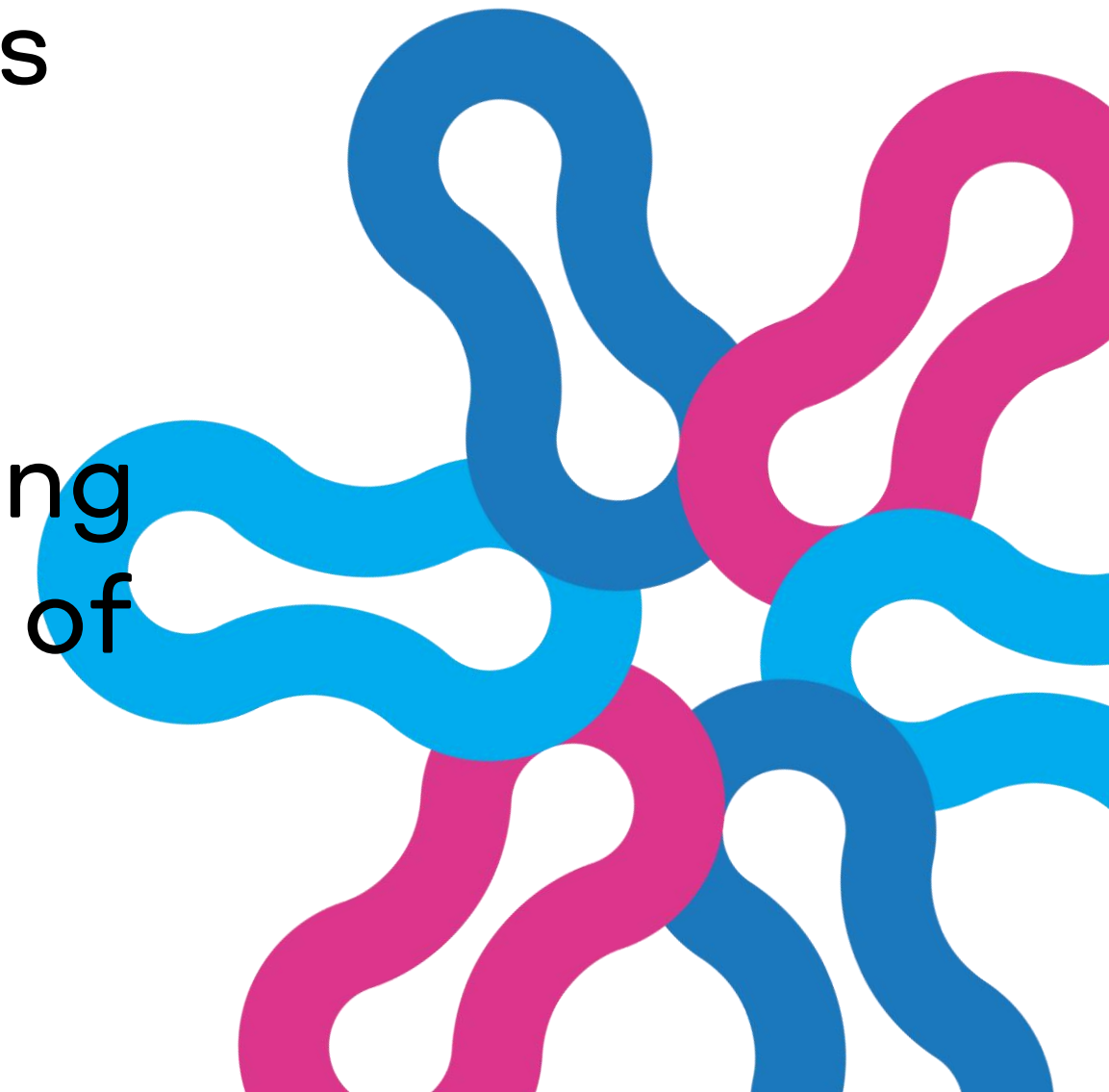
September 2017



<sup>1</sup> International Initiative for Impact Evaluation (3ie)  
<sup>2</sup> Centre of Excellence for Development Impact and Learning

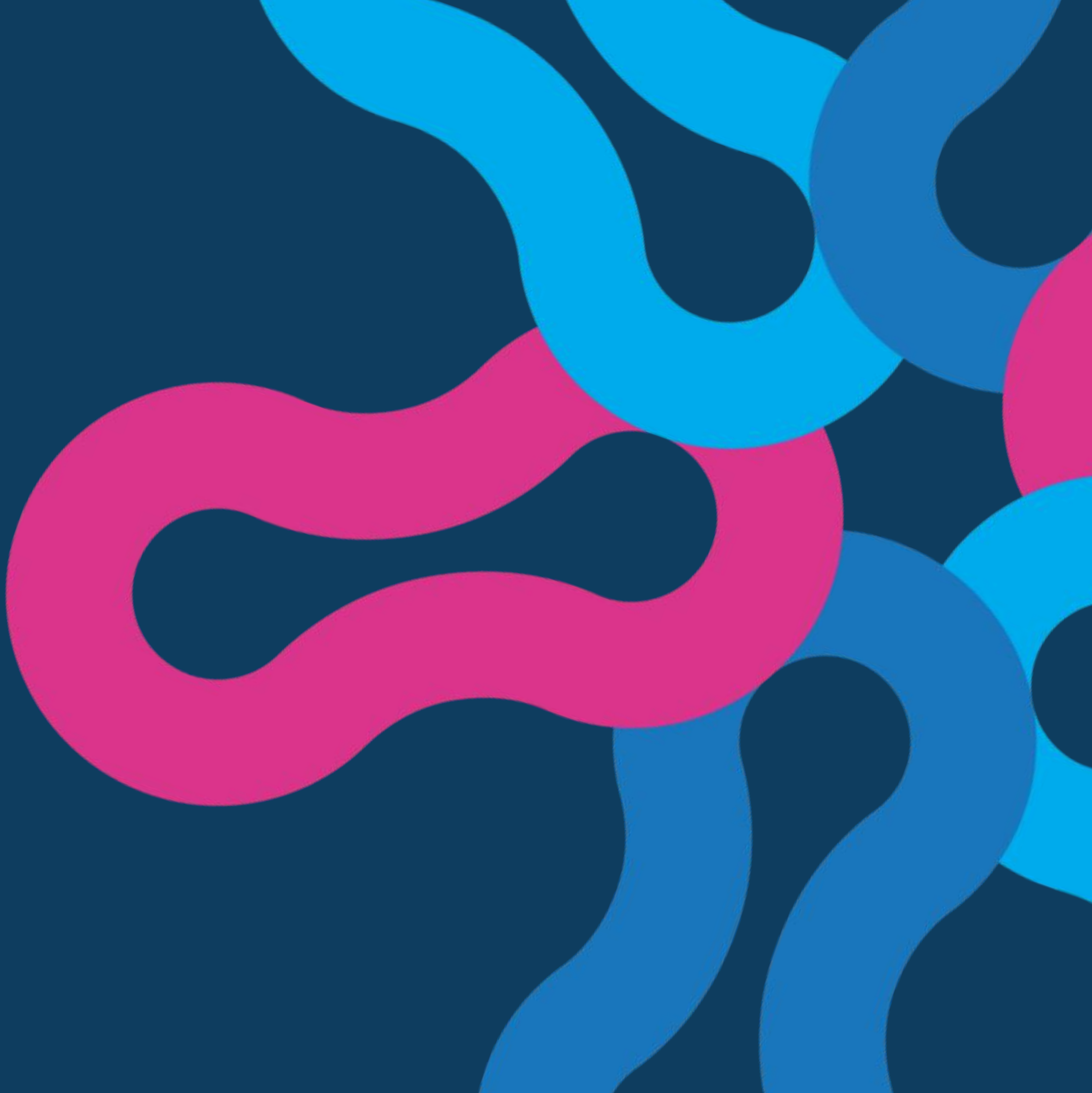
## Why is this EGM needed

- Existing maps related to SDGs only cover low- and middle-income countries
- Other maps focus on partnership aspects (i.e. EGM of impact evaluations on “What works to accelerate progress on the Partnership Pillar of the SDGs”)
- a holistic view that can inform policy-making and practical implementations in the state of evidence available on SDGs.



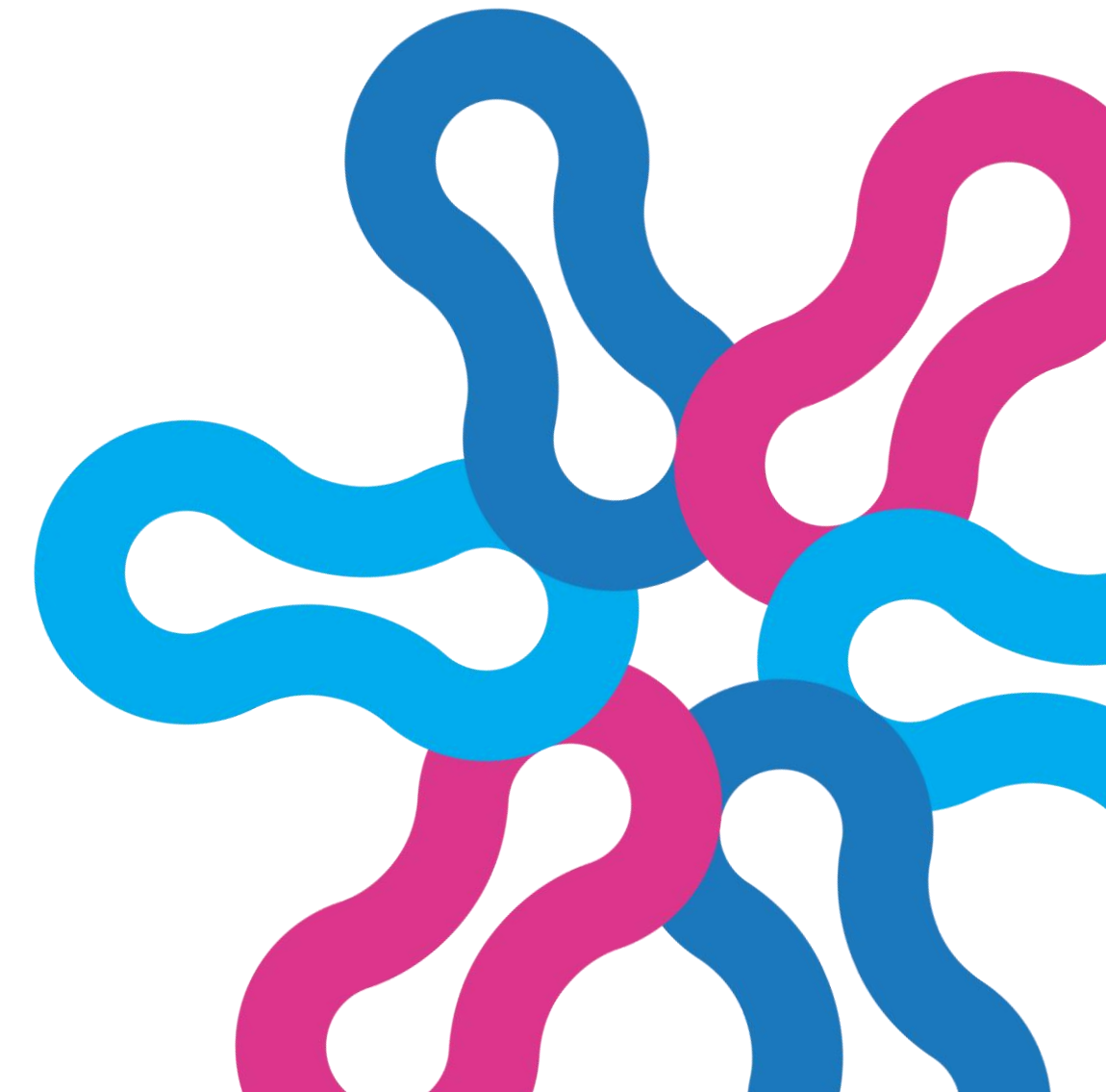
# Methodology

- Search Strategy
- Inclusion Criteria
- Coding/Data Extraction
- Generating the map



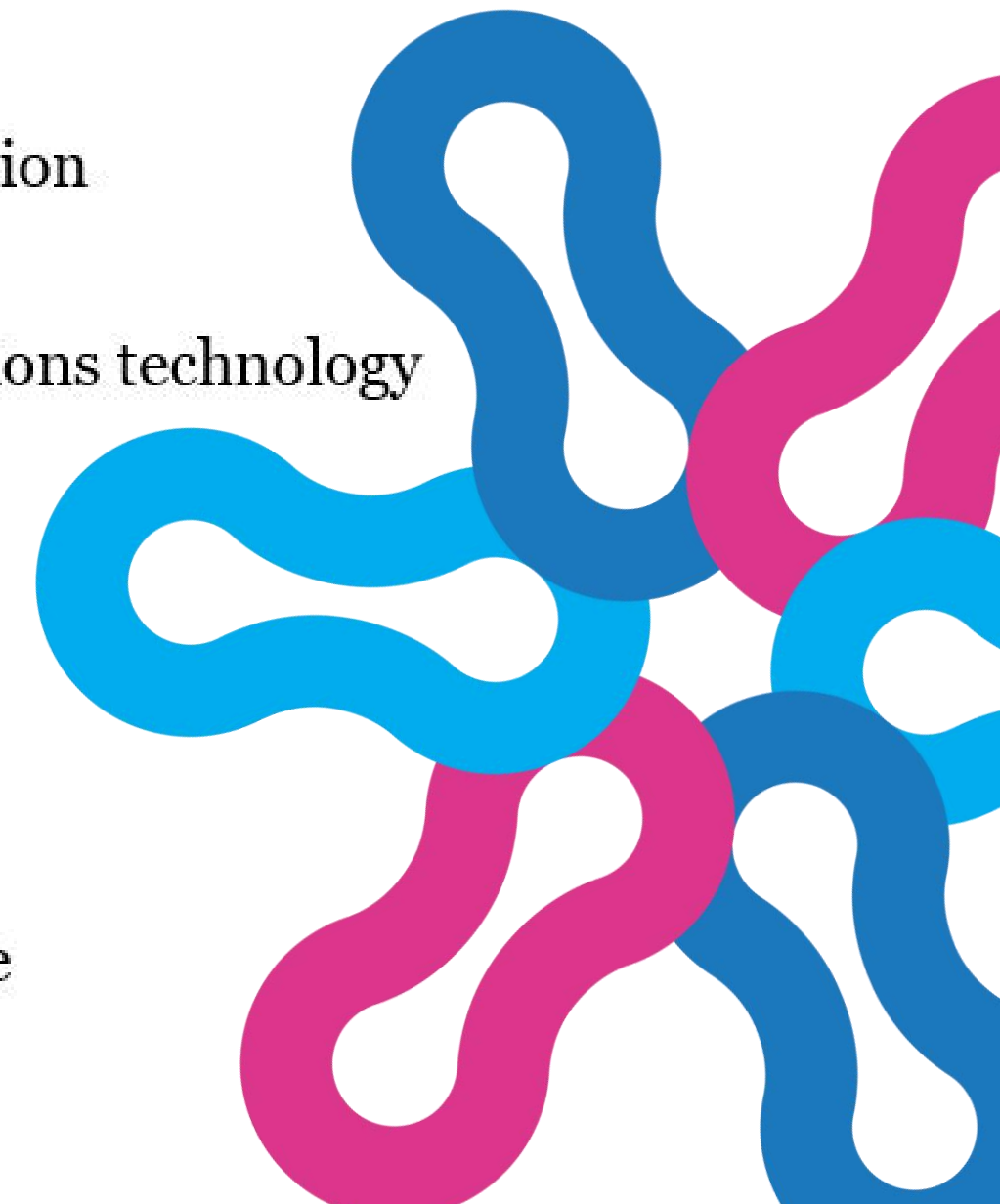
## Search strategy

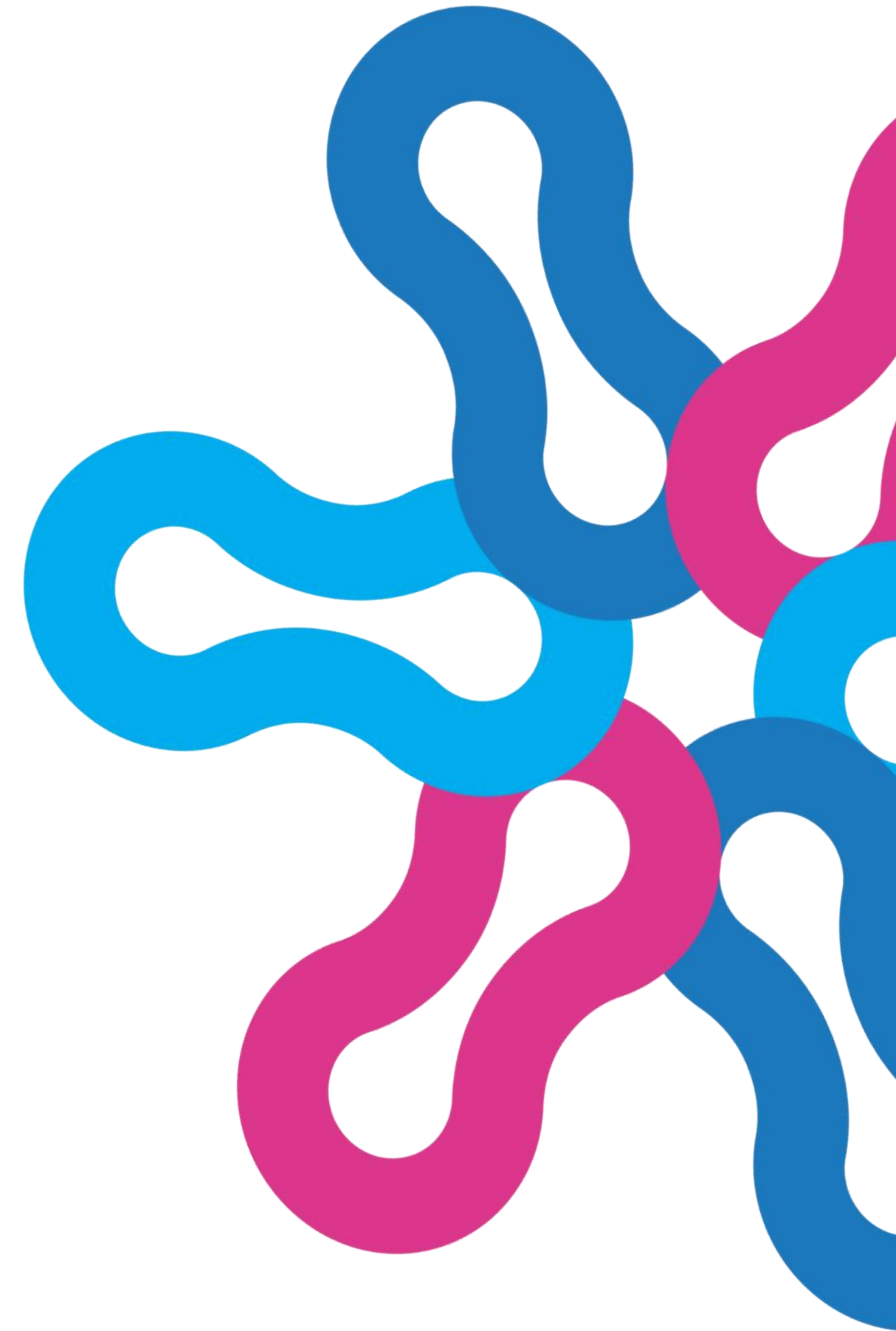
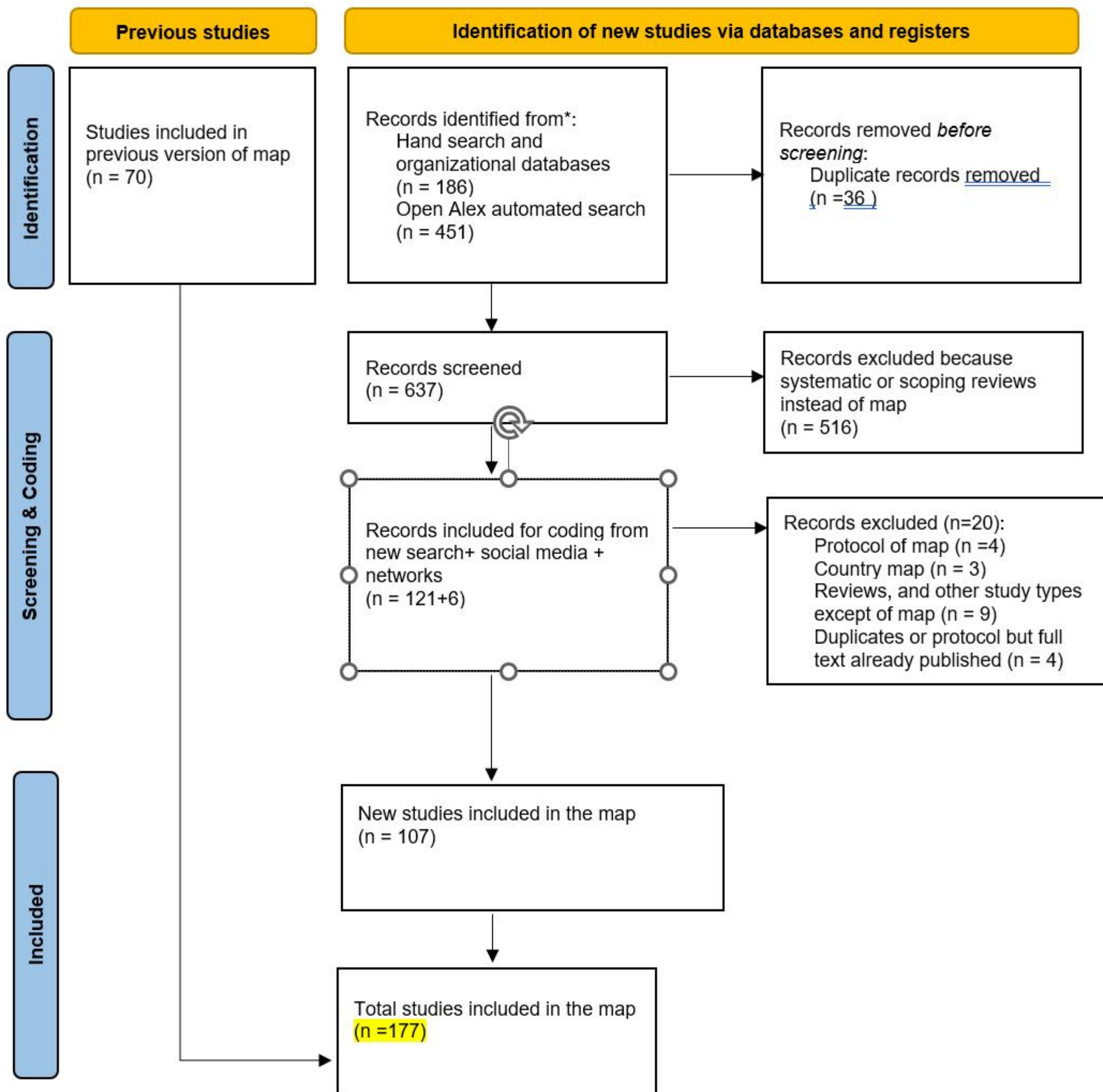
- Systematic search from Web of Science and Google Scholar
- Hand search from organizational databases such as Campbell Collaboration, 3IE, and some sector-specific organizations, as well as social media like X (formerly Twitter)
- Open Alex Machine Learning search
- Research network sources



# Inclusion Criteria

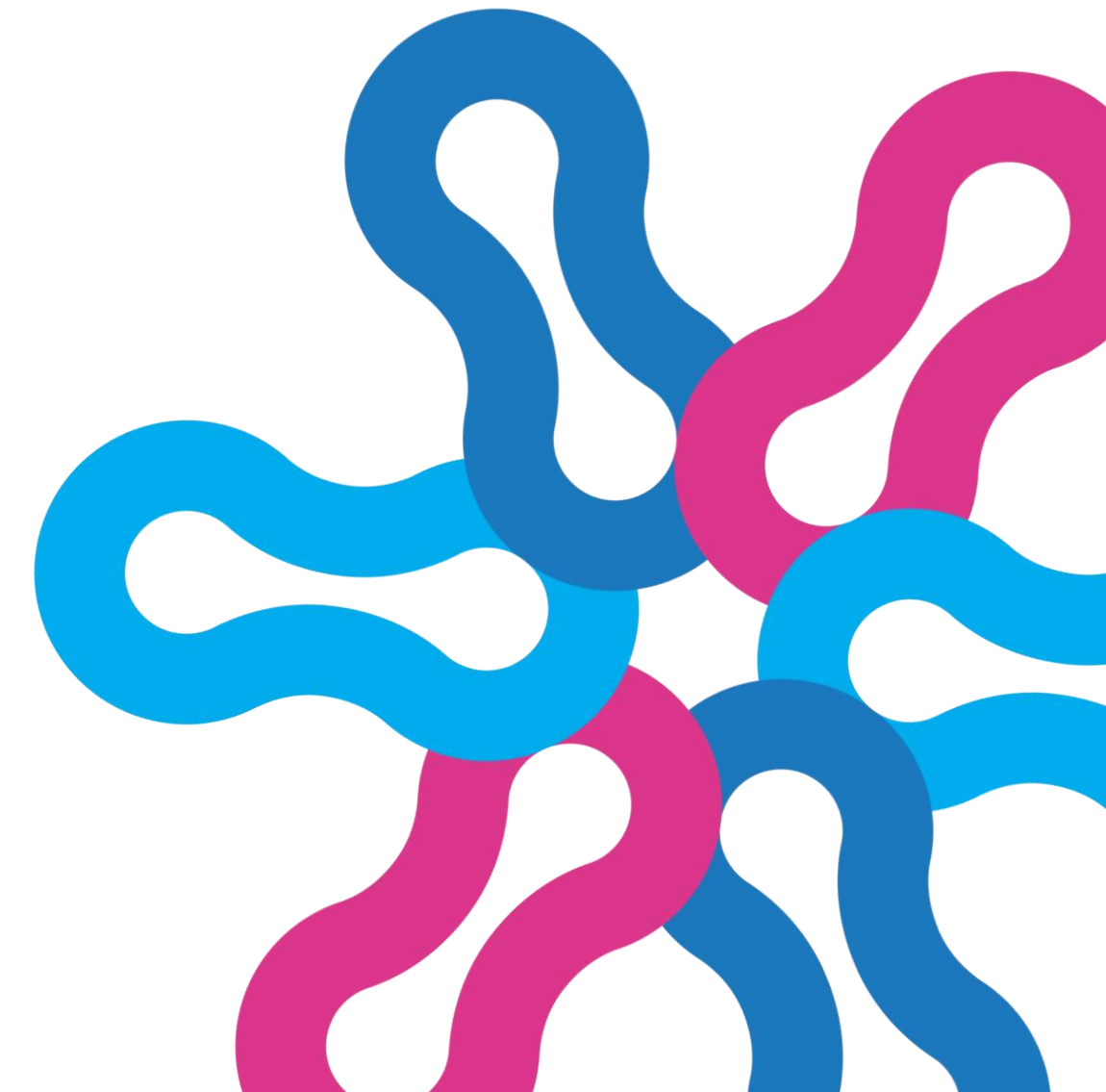
- Includes maps in high-income countries and country maps,
  - Has to be online and interactive
  - Interventions: aligned with the SDGs across different sectors following the World Bank's sectoral classification
  - Outcomes: 17 SDGs classified by the UN and Cost
- Agriculture and rural development
  - Climate change and environment
  - Conflict management and post-conflict reconstruction
  - Cross-sectoral
  - Economic policy
  - Education
  - Energy
  - Finance
  - Health, nutrition, and population
  - Humanitarian
  - Information and communications technology
  - Private sector development
  - Public sector management
  - Social protection
  - Transportation
  - Urban development
  - Water, sanitation, and hygiene

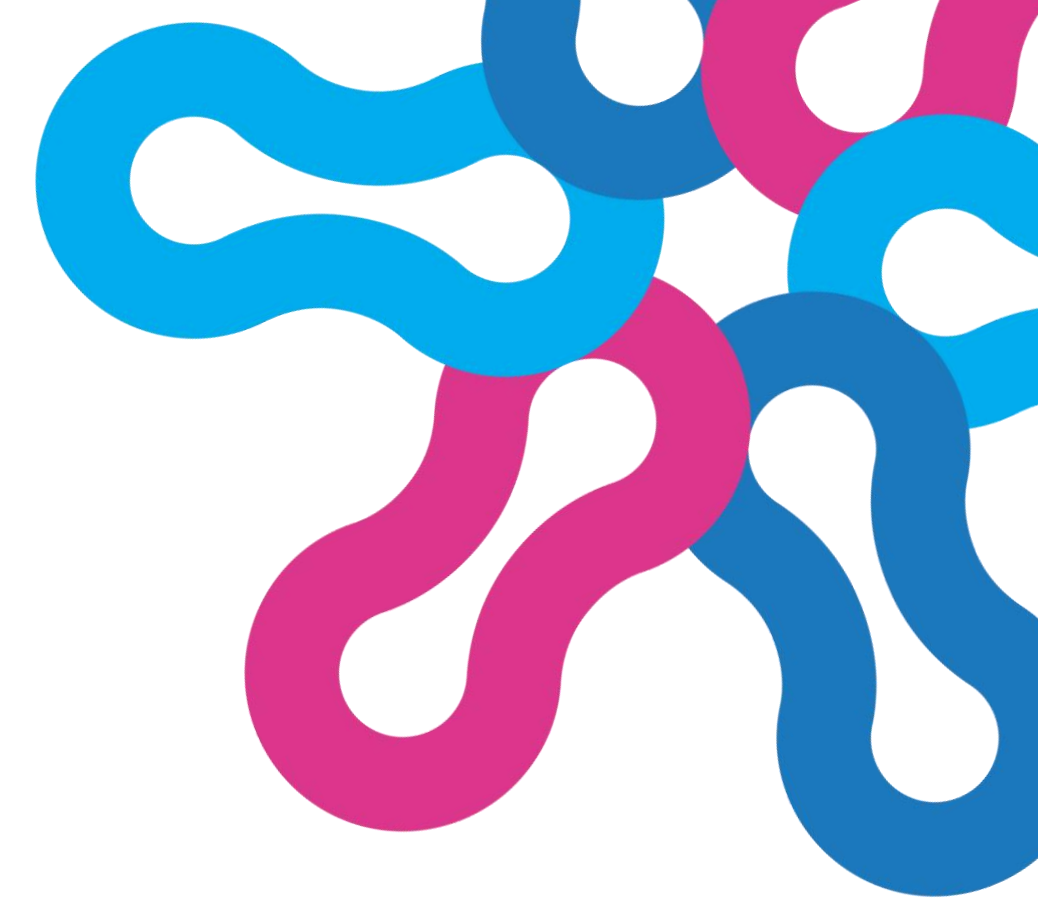




# Coding/Data Extraction

- Coding of a limited number of study and intervention characteristics- based on the framework
- Engage users (user commissioners and coproduction)
- Pilot, pilot, pilot (coproduction)- think of users
- Important to have a codebook





# Coding/Data Extraction

Items	Notes
Study ID	ID in EPPI-reviewer
Short title	short title + first author + publication year
Title	full title
Abstract	Abstract
Publication date	day/month/year
Authors	All the authors
Inclusion criteria study types	All studies systematic reviews impact evaluations other
Geographic focus	Global regional L&MIC
Regions/Country	East Asia and Pacific South Asia Europe CIS Middle East and North Africa Sub-Saharan Africa Latin America and the Caribbean North America
Equity data-Dimension of equity/ population	Age Caste Disability Education Gender and sex Land ownership Occupation Place of residence Race, ethnicity, culture and language Religion Social capital Socioeconomic status Other (Open answer)
Interventions	Intervention category in the map
Intervention sectors	Agriculture and rural development Climate change and environment Conflict management and post-conflict reconstruction Cross-sectoral Economic policy Education Energy Finance Health nutrition and population Humanitarian Information and communications technology Private sector development Public sector management Social protection Transportation Urban developmentthe

	Urban developmentthe Water, sanitation and hygiene
Outcomes	Outcome category in the map
Outcomes by SDGs	SDG1 - Poverty SDG2 - Agriculture nutrition and food security SDG3 - Health SDG4 - Education and Learning SDG5 - Gender equality and empowerment SDG6 - WASH SDG7 - Energy SDG8 - Economic growth and employment SDG9 - Infrastructure SDG10 - Inequality SDG11 - Urban and rural development SDG12 - Consumption SDG13 - Climate change SDG14 - Marine SDG15 - Ecosystem related outcomes SDG16 - Peaceful and inclusive societies SDG17 - Global Partnership Cost
URL for full-text/ongoing study	URL for map (and download the report)
Funder	open answer
Publication type	Journal or book Contracted report Grey literature
Equity data-How does this map consider equity	By inclusion criteria/thematic focus By analysis Not applicable
Number of included studies in map	Number of included studies in map
What methods of analysis were used	Interactive matrix Other matrix Histograms, charts, tables Narrative description of evidence
Database of studies?	Yes No
Did the map identify knowledge clusters?	Yes No
Inclusion restrictions	Language Year of publication Publication status Not reported
Reporting of findings	Some results of included studies reported study-by-study; Authors go beyond describing evidence or reporting results study-by-study They synthesize; No reporting of findings
Search included grey literature	Yes No

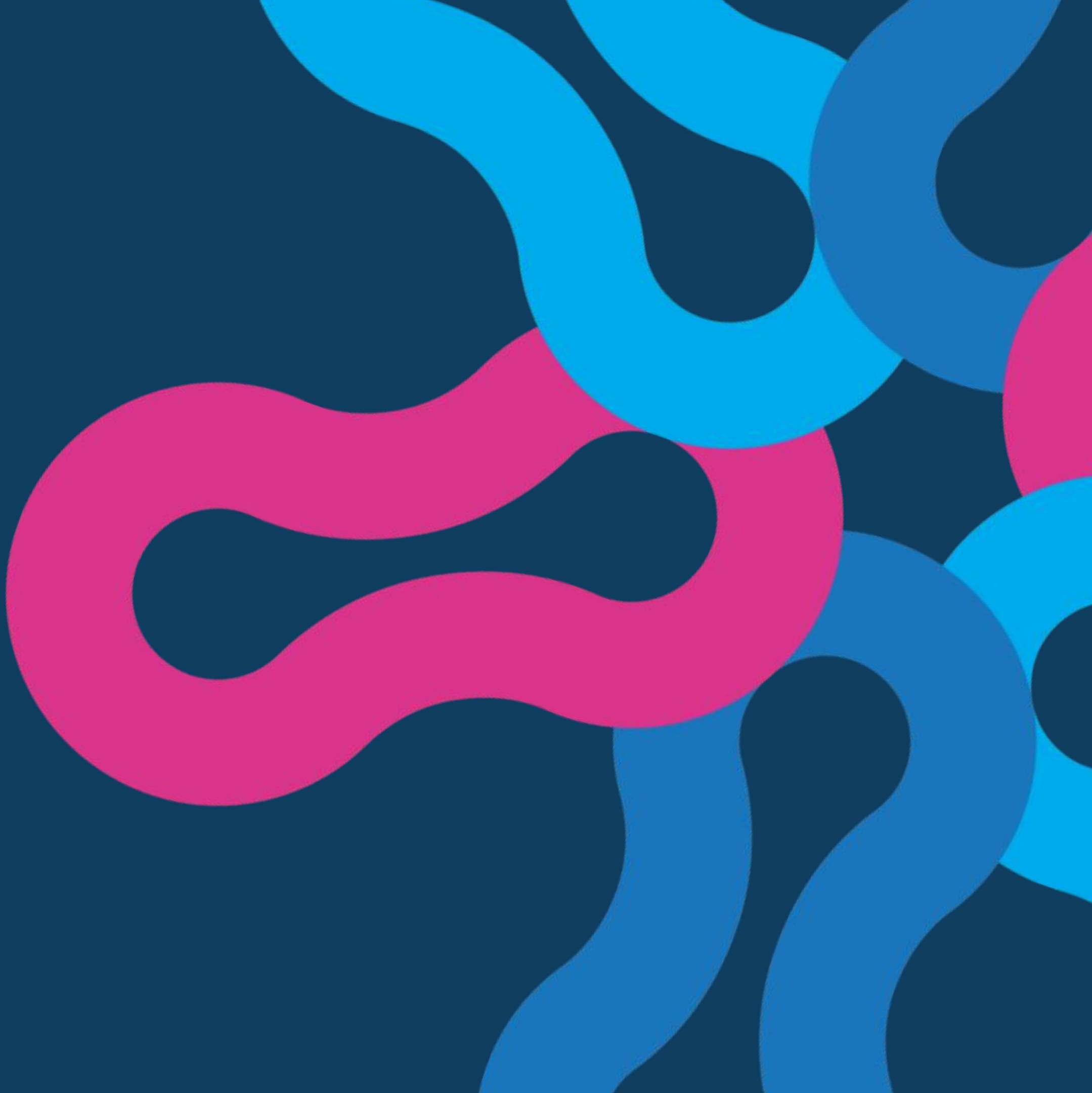
# Generating the map

## Producing the maps in EPPI Reviewer/EPPI Mapper

Advantages	Disadvantages
Custom-built systematic review software for screening and coding	Less familiar and intuitive software
In the cloud: multiple team members can work on screening and coding (even on your phone)	Content control
Machine learning searching and screening	
Generate tables and figures from coded studies (Excel)	Cannot easily import and export data
Use EPPI Mapper to generate maps with flexible format and growing functionality	



# Key Findings (Preliminary)





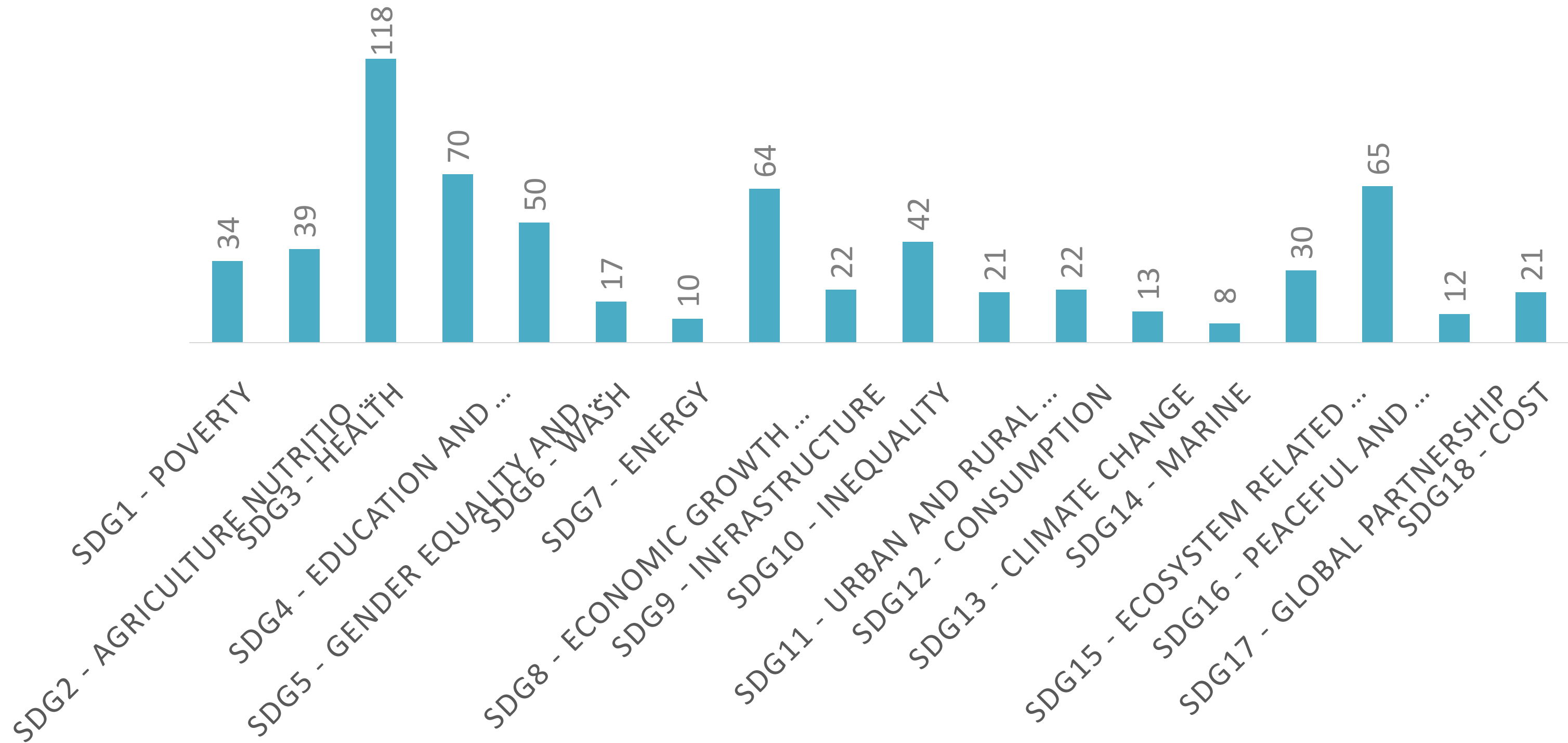
# Map of Evidence and Gap Maps relating to Sustainable Development Goals



● Global ● Regional ● L&MIC ● Other

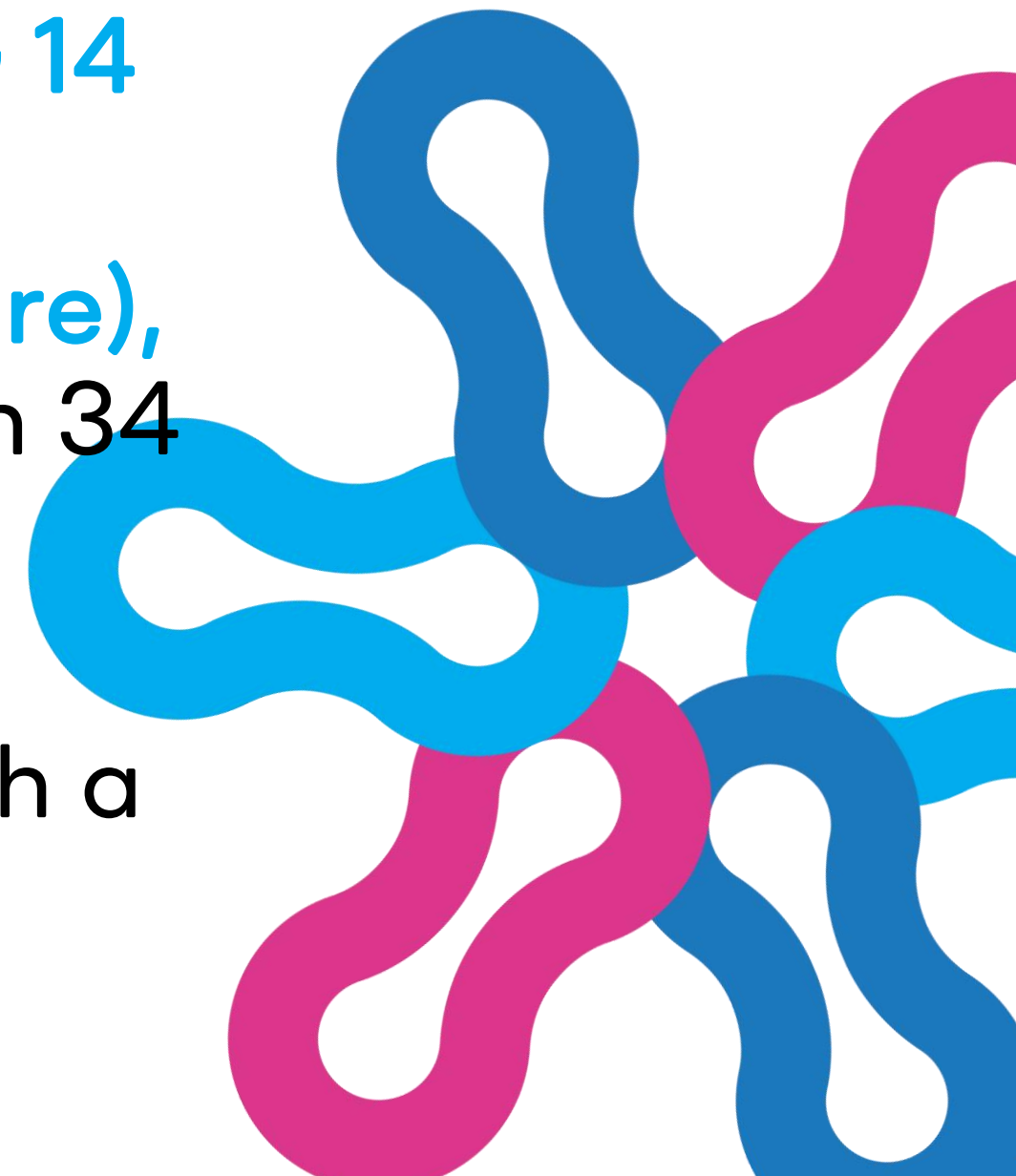
Generated using v.2.3.0 of the EPPI-Mapper powered by [EPPI Reviewer](#) and created with ❤️ by the [Digital Solution Foundry](#) team.

# 177 maps are included and most of these focus on SDG 3 Health, followed by SDG 4 Education and Learning



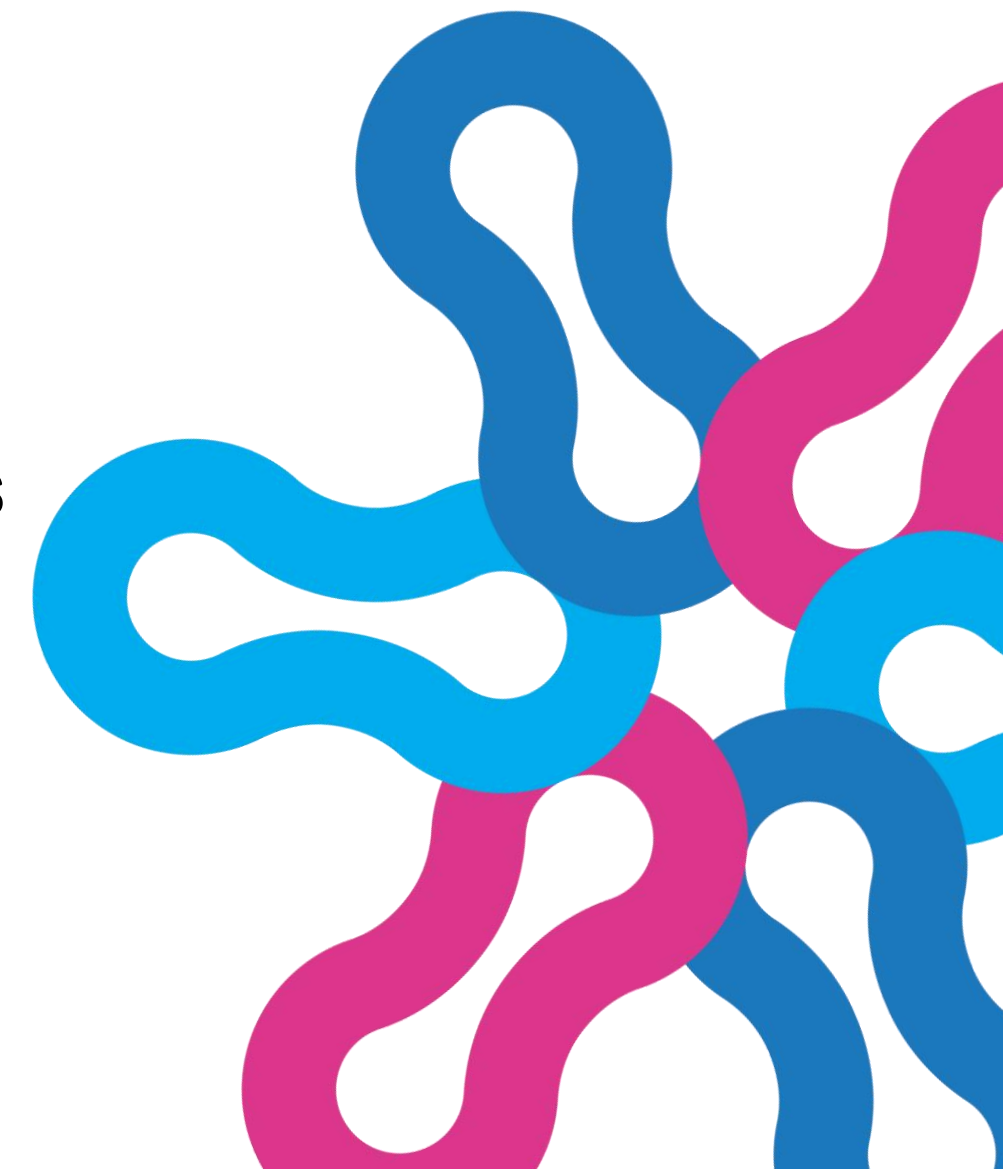
# Key Findings

- **SDG 3 Health** has highest number of maps, indicating strong focus on health-related interventions
- Low coverage in **Marine and Energy SDGs (SDG 14 and 7)**, with 8 and 10 maps respectively.
- SDGs such as **SDG 1 (Poverty), SDG 2 (Agriculture), and SDG 4 (Education)** are well-researched with 34 to 70 maps respectively
- Majority of the maps focus on **Low- and Lower-Middle Income countries**, followed by those with a global scope.



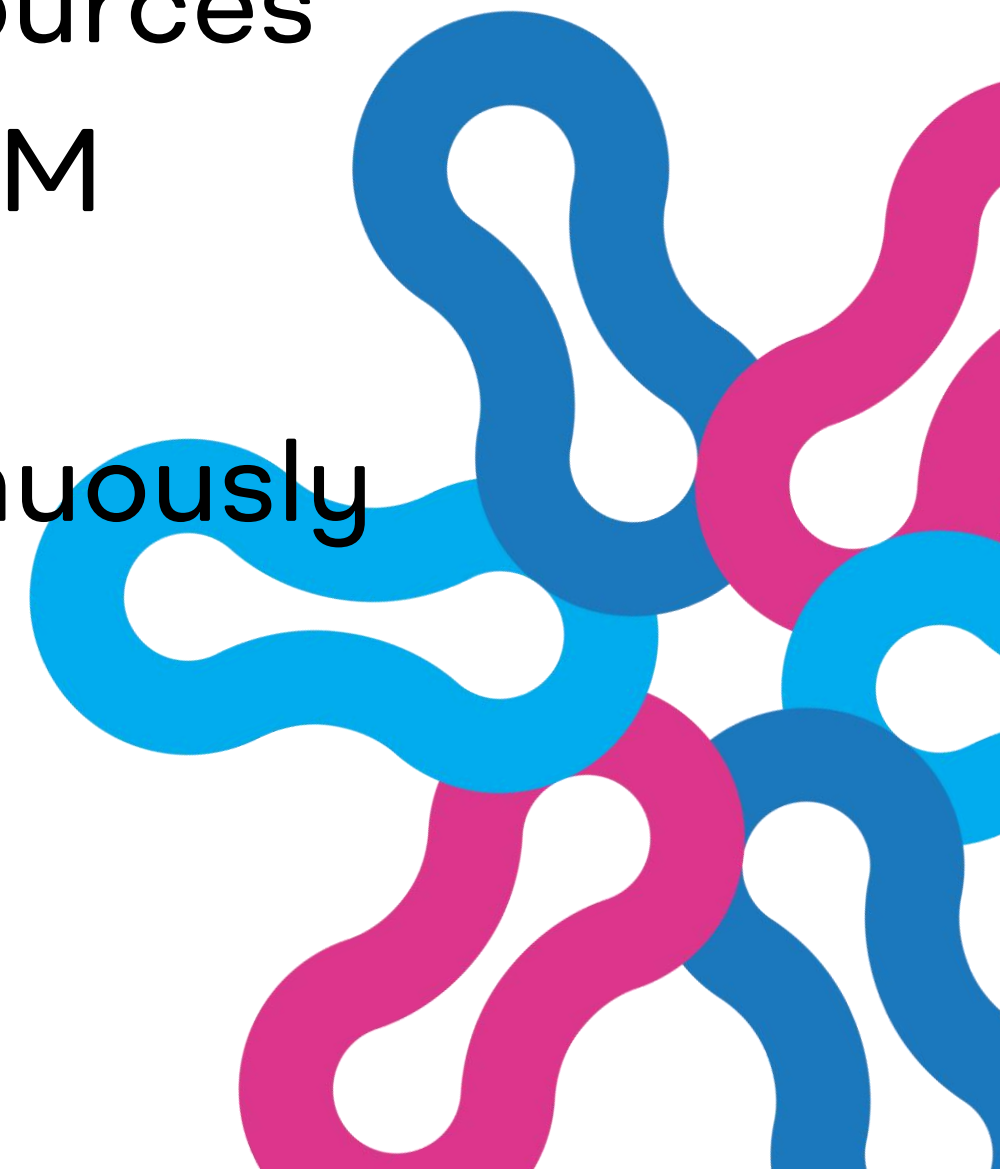
# Research Gaps in SDGs

- **Low coverage in environmental SDGs:** SDG 14 (Marine) and SDG 7 (Energy) have the lowest number of maps, indicating a gap in research for marine environments and clean energy solutions.
- Insufficient evidence on the intersection of **SDG 13 (Climate Change)** with other SDGs.
- **SDG 16 (Peace) and SDG 12 (Consumption)** show moderate mapping, suggesting areas need for more research.
- **SDG 11 (Urban development) and SDG 10 (Inequality)** have decent number of maps (21-42) but more research is needed to provide a comprehensive view of these issues.
- **Limited focus on SDG 17 (Global Partnership)**- 12 maps; more mapping needed to understand multi-stakeholder collaboration and resource mobilization.



## Future Directions and Next Steps

- We plan to develop a network diagram to visualize the diffusion of EGM sources
- We will refine and polish the search strategy to ensure comprehensive inclusion of relevant sources
- Critical appraisal for the maps, use the PRITEM framework
- As this is an ongoing project, we aim to continuously add more maps as they are completed.





global  
**evaluation**  
initiative

# Thank you!

Nina Ashley Dela Cruz

EMAIL: [naodelacruz@gmail.com](mailto:naodelacruz@gmail.com)

dela2023@lzu.edu.cn

[www.glocalevalweek.org](http://www.glocalevalweek.org)