

Communities of practice within the M and E Sector: The Case of Women in Research, Monitoring, Evaluation and Learning

Webinar | 5th June, 2024 | 4:00 pm GMT



Agenda



gLOCAL
EVALUATION WEEK
powered by GEI



No.	Activity	Time (GMT)
1.	Welcome and introduction	4:00 – 4:05 pm
2.	Presentation on Communities of Practice & Women in RMEL by Linda Ntsiful	4:05 – 4:15 pm
3.	Testimonials and panel discussion with Gladness Kampa and Esther Tiekou	4:15 – 4:35 pm
4.	Q and A /Comments	4:35 – 4:55 pm
5.	Announcements	4:55 – 5:00 pm
6.	Closing	5:00 pm

Icebreaker

If you had the opportunity to start a community of practice what would it be about?



What are Communities of Practice (COP)?



© Wenger, -Trayner2023

*“Communities of practice are groups of **people** who **share a concern or a passion** for something they do and **learn how to do it better** as they **interact regularly.**”*

Wenger-Trayner E, Wenger-Trayner B. Communities of Practice, a brief introduction. 2015.
<http://wenger-trayner.com/introduction-to-communities-of-practice/>

Characteristics of a COP



Wenger-Trayner E, Wenger-Trayner B. Communities of Practice, a brief introduction. 2015.
<http://wenger-trayner.com/introduction-to-communities-of-practice/>

Importance of COP

Support

Learning

Promotion
of work

Innovations

Educate

Connections

Collaborations

Knowledge
sharing



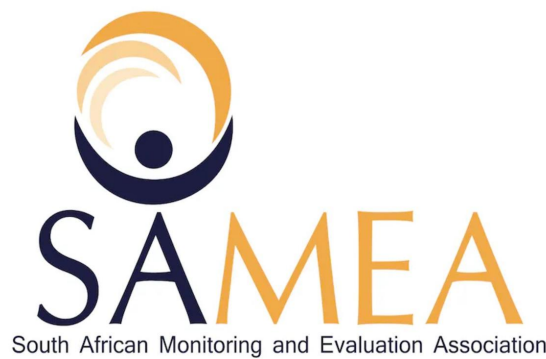
Examples of Communities of Practice in M & E



African Evaluation Association
Association Africaine d'Evaluation



NLP Community of Practice



Women in RMEL – How it started

Need

Women professionals in the M&E sector do not have a collaborative space for addressing their challenges, sharing their work, and empowering the next generation of female professionals.



Solution



Online community focused on accelerating the careers of women in the RMEL sector

Women in RMEL – Meetups & Events



Women in RMEL

@womeninrmel · 59 subscribers · 18 videos

More about this channel >

Customise channel Manage videos

Home Videos Community

Latest Popular Oldest



Women in RMEL_Helping Monitoring and Evaluation Professionals to Navigate an AI...
4 views · 22 hours ago



Women in RMEL April meetup Telling Impact Stories with Impact Mapper
74 views · 3 weeks ago



Women in RMEL - 27th March 2024_Relevance of Data Science to RMEL
44 views · 2 months ago



How to Design Creative Learning Sessions That Actually Help Teams Learn
37 views · 2 months ago



Women in RMEL 30th Jan 2024 Using Kinaki as a Monitoring and Evaluation Platform
20 views · 3 months ago



Women in RMEL Interactive Session - Achievements | Lessons Learned |...
17 views · 5 months ago



Women in RMEL 30th November, 2023 Developing a Culture of Learning for...
74 views · 5 months ago



Abridged version Women in Monitoring and Evaluation 2023. Event was held on...
12 views · 6 months ago



Tips for Designing Quality Survey Questions as a Monitoring and Evaluation Professional
36 views · 7 months ago



Mastering the Art of Communication as a Research, Monitoring, Evaluation and...
26 views · 8 months ago



Women in RMEL Exploring the Use of TolaData for Monitoring and Evaluation 28...
46 views · 9 months ago



Developing Your Program's Monitoring & Evaluation System_Women in RMEL_26th...
28 views · 10 months ago



Storytelling for Monitoring and Evaluation Professionals_Women in RMEL_29th May...
37 views · 11 months ago



Designing a Theory of Change for Projects_Women in RMEL_28th April 2023
34 views · 1 year ago



My Journey as a Monitoring and Evaluation Expert_27th March 2023
54 views · 1 year ago



Women in RMEL Basic Concepts of M and E_27th February 2023
17 views · 1 year ago



Women in RMEL Meet and Greet Recording

[Women in RMEL YouTube Channel](#)



Women in RMEL – Feedback & Increasing our reach

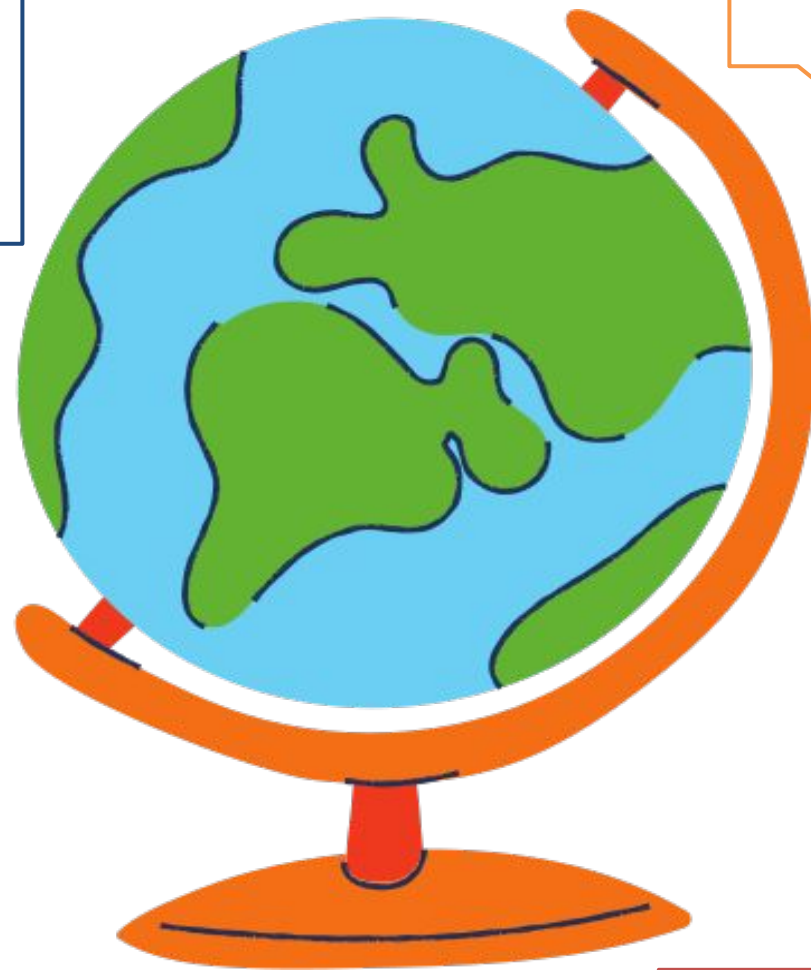
I feel the platform needs some more marketing and visibility, a lot of people can benefit from it

Very beneficial

It would be great if the training session could be extended, bring in evaluations and measuring impact components

I really learnt a lot today.

Thanks for putting this together. Other areas of interest will be creating and managing M&E systems.

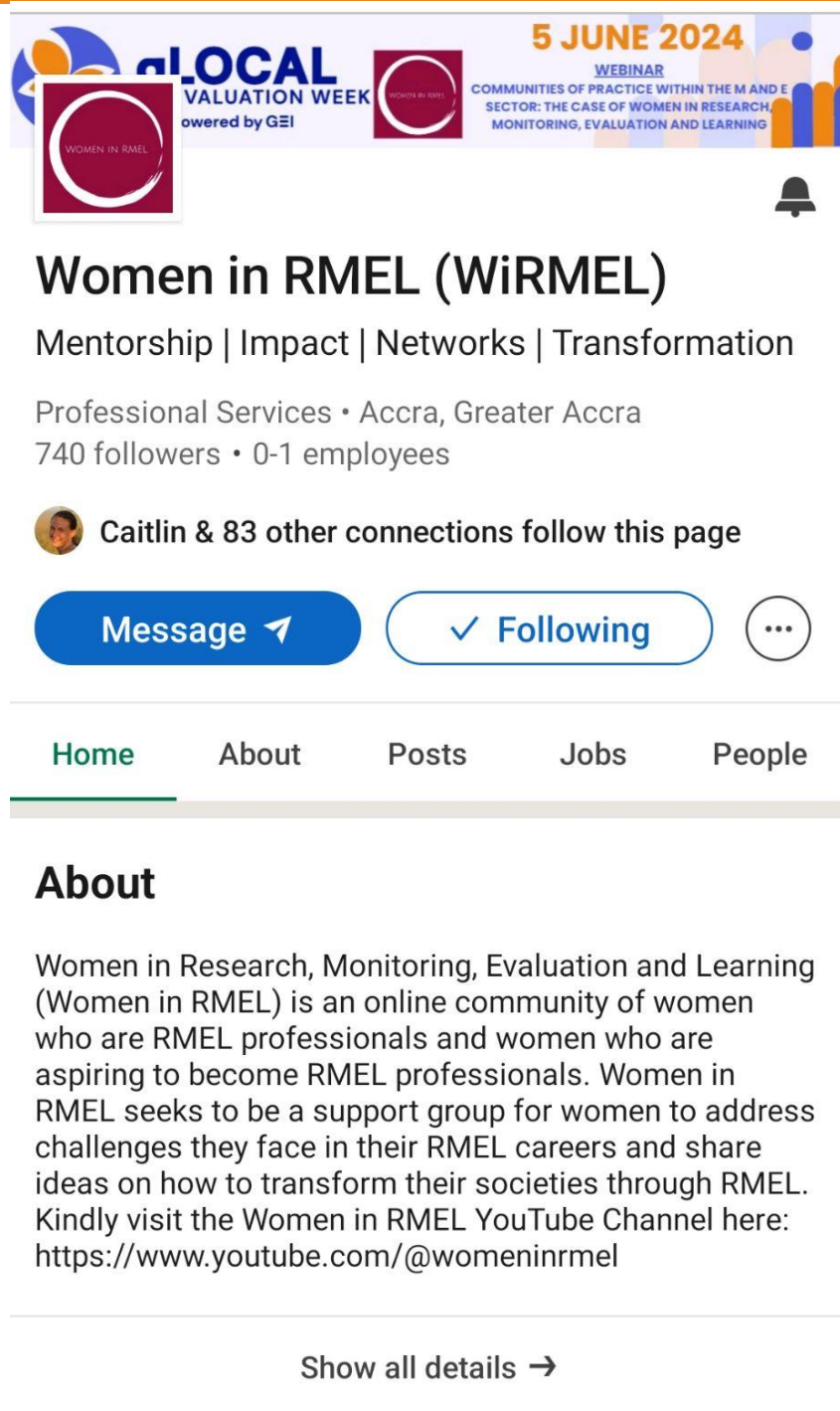


~294

participants

(cumulative from Jan 2023 - May 2024)

Women in RMEL on Linked in, WhatsApp & X



Women in RMEL (WiRMEL)
Mentorship | Impact | Networks | Transformation

Professional Services • Accra, Greater Accra
740 followers • 0-1 employees

Caitlin & 83 other connections follow this page

Message | Following

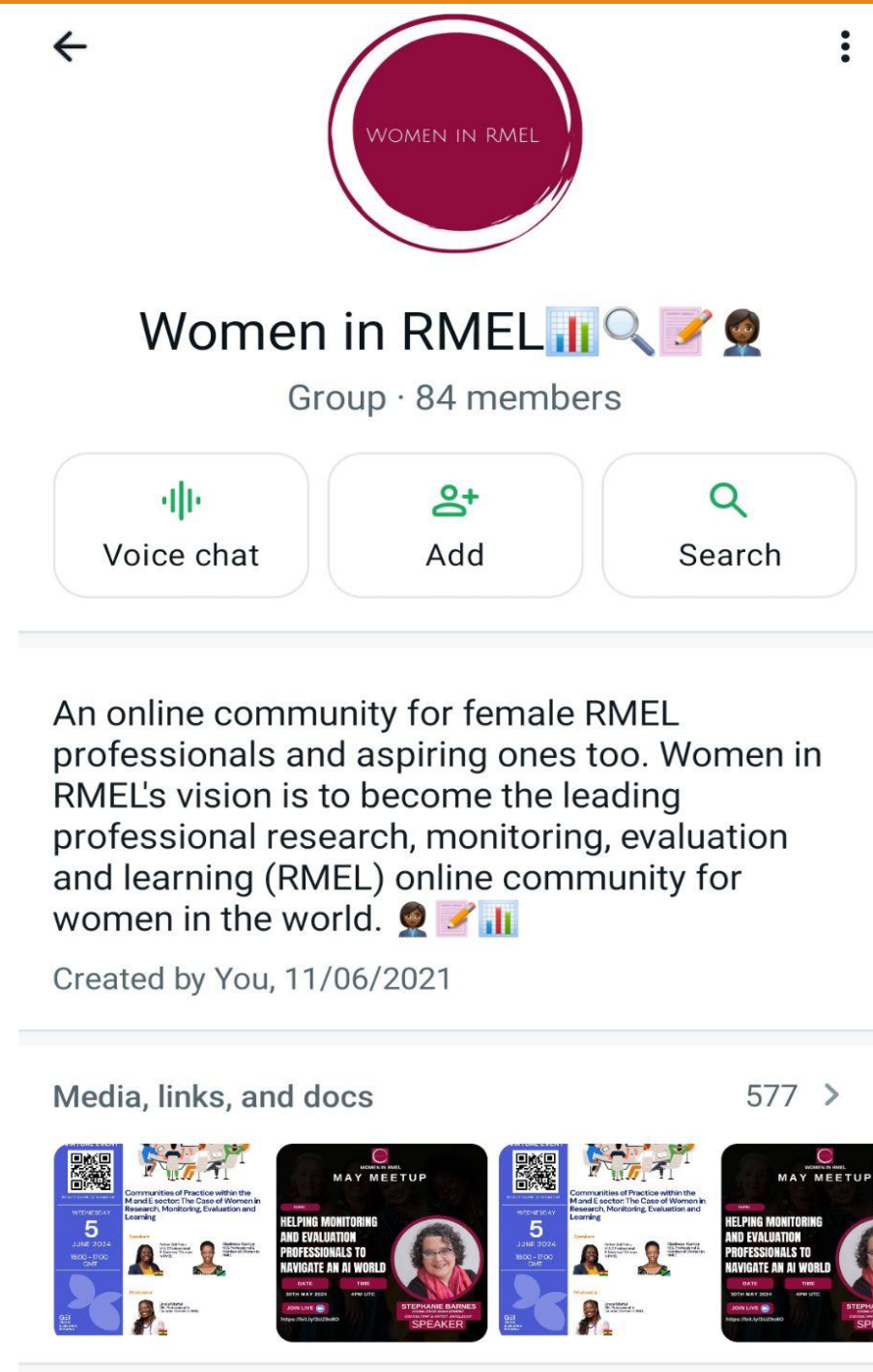
Home | About | Posts | Jobs | People

About

Women in Research, Monitoring, Evaluation and Learning (Women in RMEL) is an online community of women who are RMEL professionals and women who are aspiring to become RMEL professionals. Women in RMEL seeks to be a support group for women to address challenges they face in their RMEL careers and share ideas on how to transform their societies through RMEL. Kindly visit the Women in RMEL YouTube Channel here: <https://www.youtube.com/@womeninrmel>

Show all details →

740
Followers

Women in RMEL
Group · 84 members

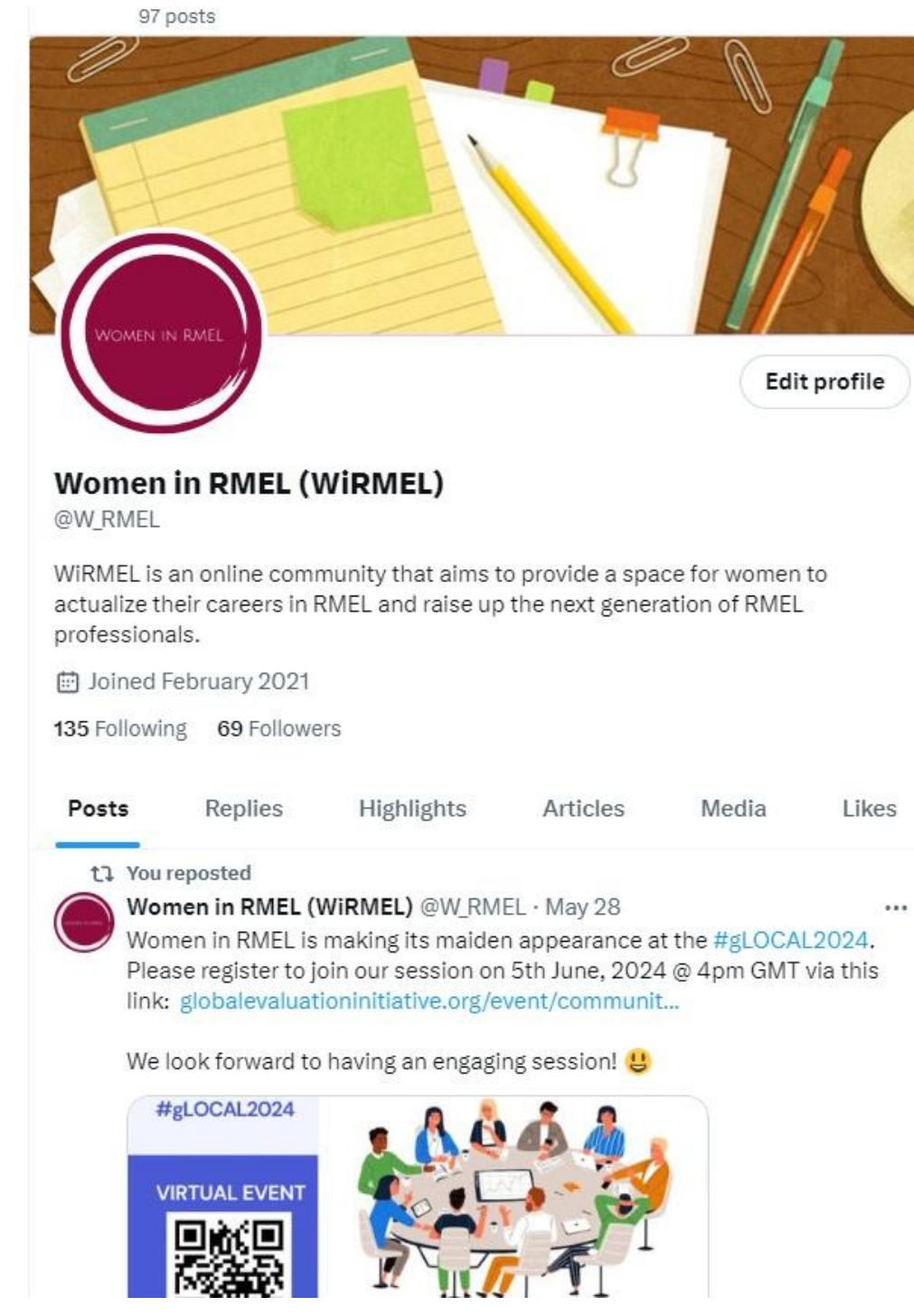
Voice chat | Add | Search

An online community for female RMEL professionals and aspiring ones too. Women in RMEL's vision is to become the leading professional research, monitoring, evaluation and learning (RMEL) online community for women in the world.

Created by You, 11/06/2021

Media, links, and docs 577 >

84
members

97 posts

Women in RMEL (WiRMEL)
@W_RMEL

WIRMEL is an online community that aims to provide a space for women to actualize their careers in RMEL and raise up the next generation of RMEL professionals.

Joined February 2021
135 Following 69 Followers

Posts | Replies | Highlights | Articles | Media | Likes

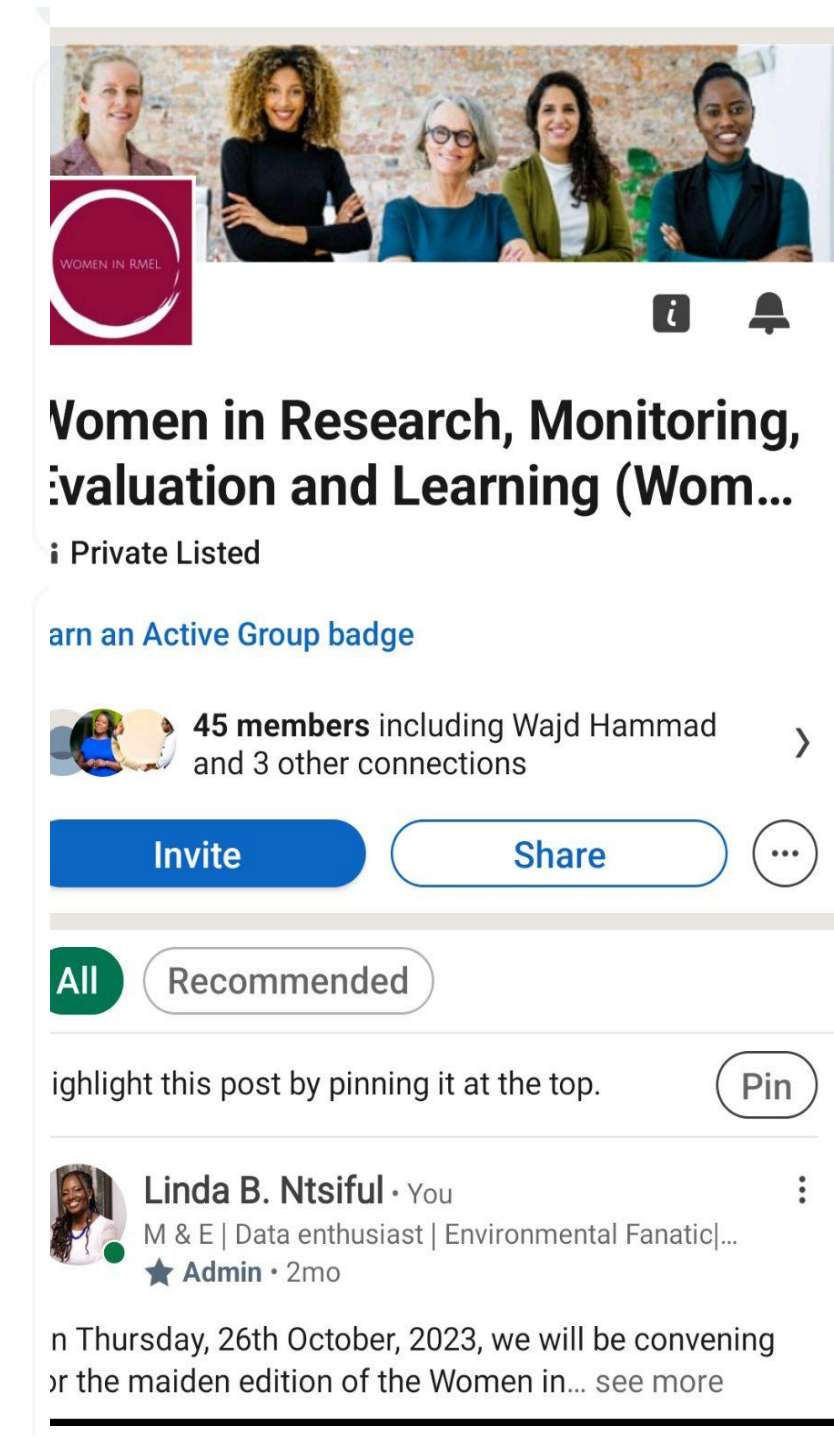
You reposted

Women in RMEL (WiRMEL) @W_RMEL · May 28
Women in RMEL is making its maiden appearance at the #gLOCAL2024. Please register to join our session on 5th June, 2024 @ 4pm GMT via this link: globalevaluationinitiative.org/event/communit...

We look forward to having an engaging session! 😊

#gLOCAL2024
VIRTUAL EVENT

69
followers

Women in Research, Monitoring, Evaluation and Learning (Wom...)
Private Listed

Earn an Active Group badge

45 members including Wajid Hammad and 3 other connections

Invite | Share

All | Recommended

Highlight this post by pinning it at the top. Pin

Linda B. Ntsiful · You
M & E | Data enthusiast | Environmental Fanatic|...
★ Admin · 2mo

on Thursday, 26th October, 2023, we will be convening for the maiden edition of the Women in... see more

45
members



Testimonials & Panel Discussion

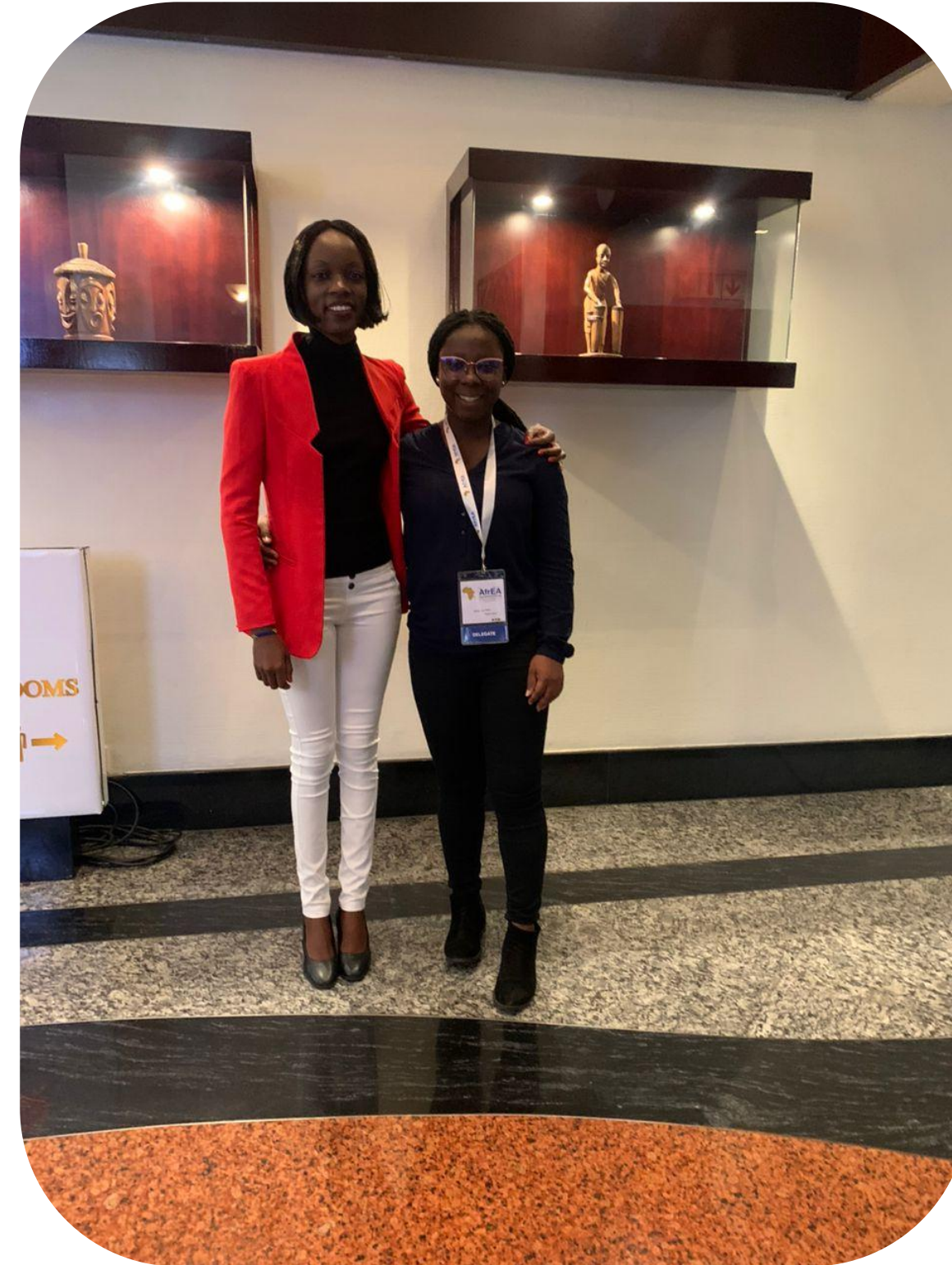


Esther Odi Tieku
M & E Professional
Member, Women in RMEL



Gladness Kampa
Project Manager, M & E Professional
Member, Women in RMEL

Testimonials: Esther & Gladness at 2024 AfrEA Conference



Questions and comments



“

**Thank you for
your attention!**



gLOCAL
EVALUATION
WEEK

powered by GΞI

→ 3 - 7 June 2024 ←

gLOCAL
EVALUATION
WEEK

powered by GEI