

How to evaluate climate adaptation

Challenges, new approaches and tools

Semana de Evaluacion - gLocal
June 2nd 2020

Dr. Emilie Beauchamp, researcher and evaluation advisor (climate and environment), iied

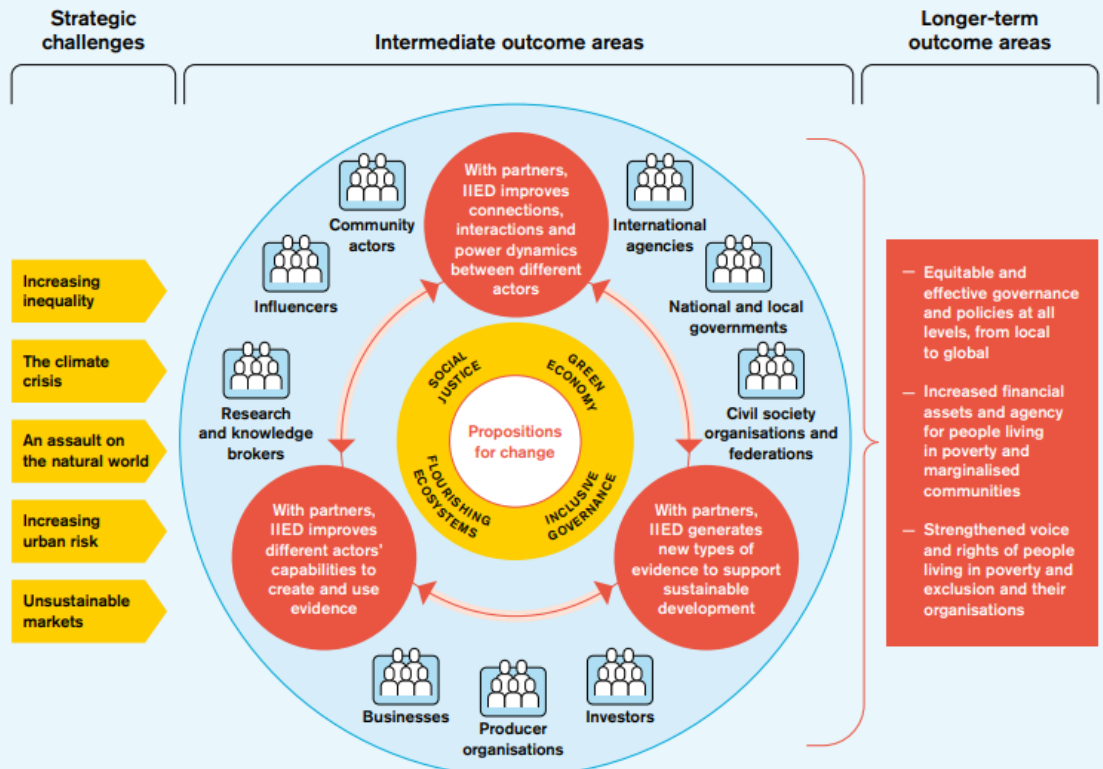
emilie.beauchamp@iied.org

iied and sustainable development

To build a fairer more sustainable world, using action and influence in partnership with others.



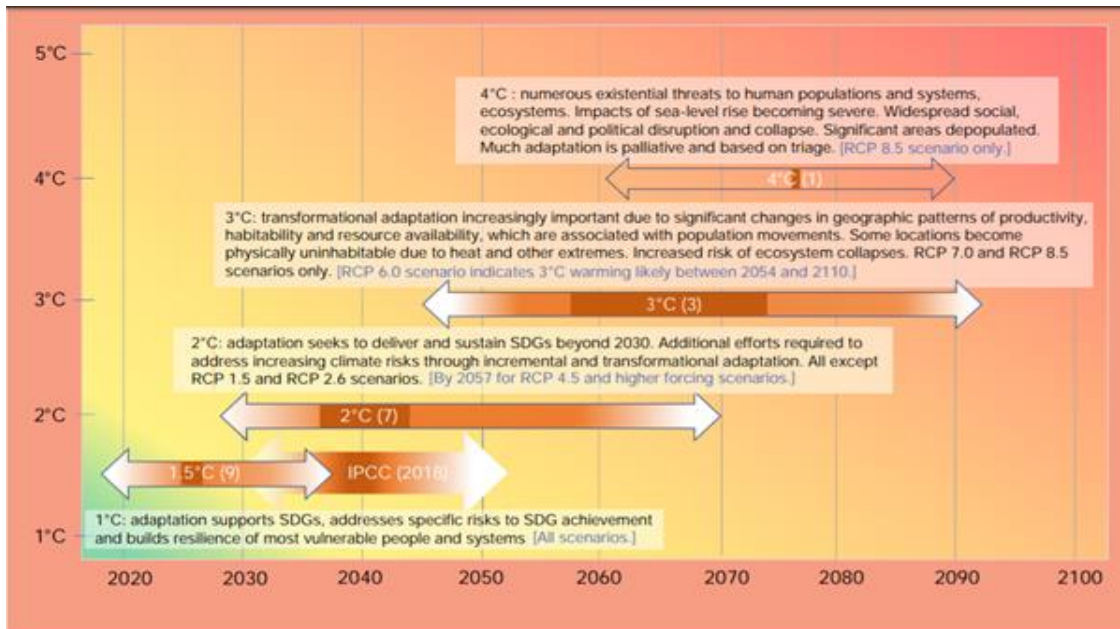
Visualising our theory of change



iiied and sustainable development

In a fast-changing world, assessing how to maintain progress towards sustainable development while facing global crises is critical.

Projected timing of global warming - MAGICC scenarios



Source Brooks N et al (2019), Framing and tracking 21st Century climate adaptation, IIED. Based on data from Arnell et al (2019), the global and regional impacts of climate change under representative concentration pathways forcings and shared economic pathways socioeconomic scenarios. Environmental Research letters

iiied

Framing and tracking 21st century climate adaptation

Monitoring, evaluation and learning for Paris, the SDGs and beyond

Nick Brooks, Simon Anderson, Illari Aragon, Barry Smith, Tracy Kajumba, Emilie Beauchamp, Stefano d'Errico and Neha Rai

Working Paper
November 2019

Monitoring, evaluation and learning
Climate change
Climate change adaptation, monitoring and evaluation (MCA), and climate risk

iiied
Governing 300, 100

Evaluation to connect national priorities with the SDGs

A guide for evaluation commissioners and managers

Outline

- Why undertake adaptation MEL?
- What constitutes adaptation success?
- Challenges for adaptation MEL
- Example of the *Tracking Adaptation and Monitoring Development* approach

Why undertake adaptation MEL



Adaptation M&E can support the ongoing **management** of adaptation interventions by assessing progress and pointing out needs for adjustments



Adaptation M&E can also support **learning and exchange** about what works well and what does not, thereby helping to improve adaptation actions



Adaptation M&E can also provide **accountability** to citizen as well as to funder by demonstrating results



M&E systems can help to gather information that is relevant for provisions of the **Paris Agreement** such as the **transparency framework** or the **Global Stocktake and the adaptation goal**

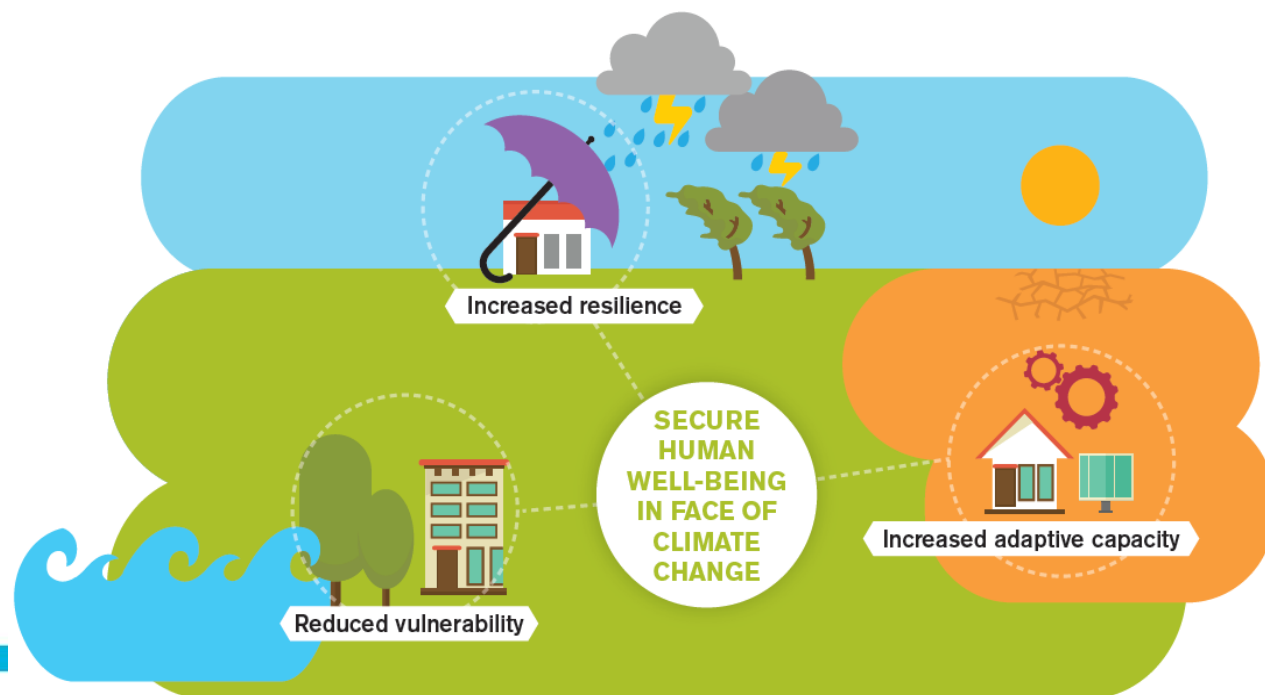
What is adaptation success?

Adaptation? The ability of a system to adjust to climate change

Resilience? Capacity of a system to cope with a hazardous event by responding in ways that maintains its essential function

Vulnerability?

The propensity or predisposition to be adversely affected

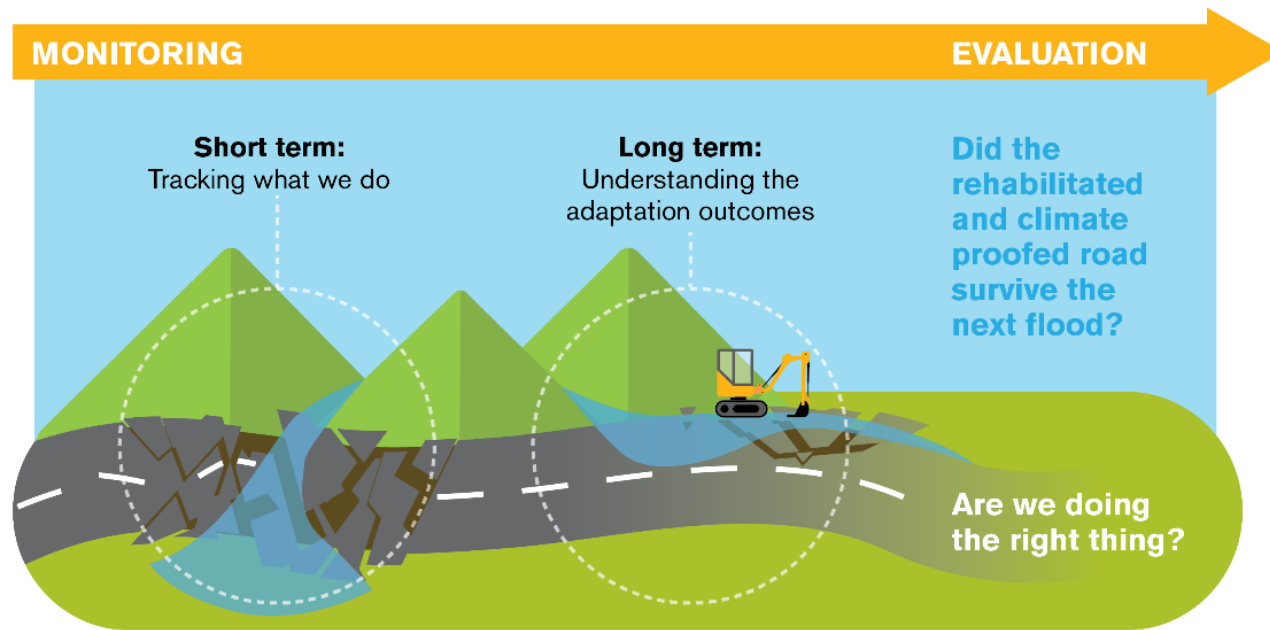


Not just what, but how!

Sustainable resilience outcomes for beneficiaries must go hand in hand with resilient institutions and processes

Outcomes must be considered in light of : i) sustainable development priorities, and ii) climate shocks and impacts

Need better linkages: assess local, national, international levels, across sectors - and integration between



Has the road been rehabilitated and climate proofed?

Measuring adaptation not straightforward

“Current results frameworks on resilience are not outcome-oriented and risk emphasising spending over results.”

*Independent Evaluation Group of the World Bank
(IEG, 2013)*

MEL challenges

CHALLENGES IN MEASURING PROGRESS



No single metric



Uncertainty and complexity



Long term horizon



Context specificity

OPERATIONAL CHALLENGES



Multiple reporting requirements and lack of MEL capacities



Connecting, but not substituting, frameworks



Indicators and comparability



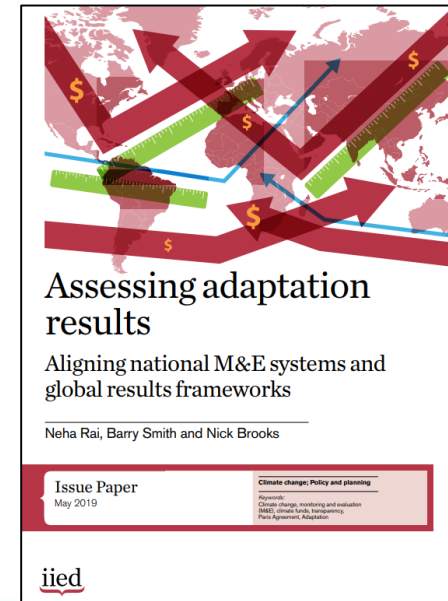
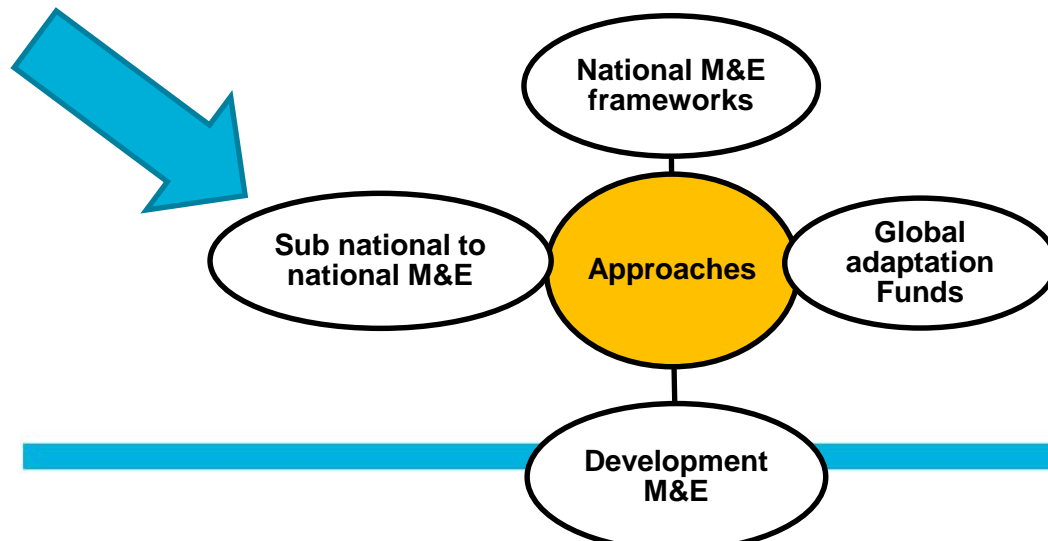
Financing and sustaining MEL within country systems



Coordinating MEL and data collection across ministries

What's being done?

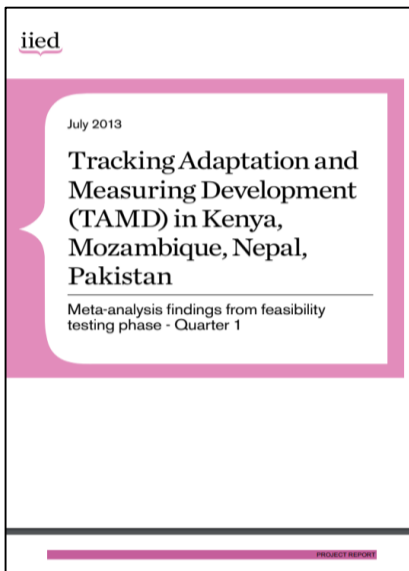
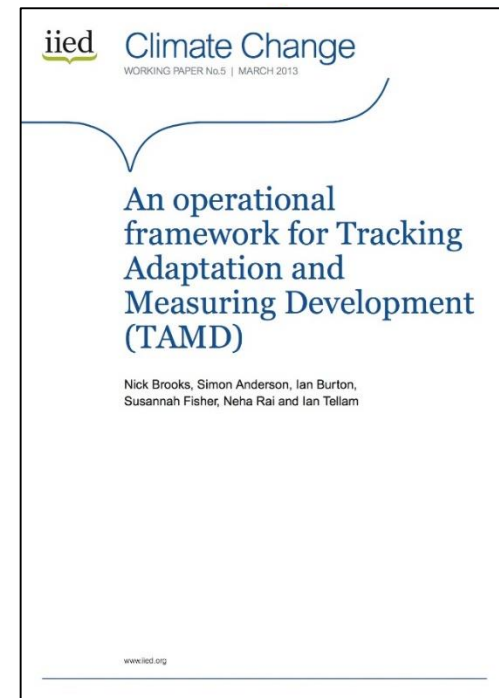
- MEL for adaptation is being done at various levels: 1) project/subnational, 2) national actions, 3) international funds, 4) development field.
- Several climate adaptation programmes have development frameworks to compare projects... But what about country linkages?
- Some countries that have developed MEL systems for adaptation. But most are not fully operational.
- Monitoring, but not necessarily evaluating...



Approach: Tracking Adaptation & Measuring Development (TAMD)

An evaluative framework for assessing the effectiveness of adaptation actions *in the frame climate risks to sustainable development*

- Adaptation as the ability to live and thrive in the face of climate risks
- Can be applied at all levels – international to local, and across sectors

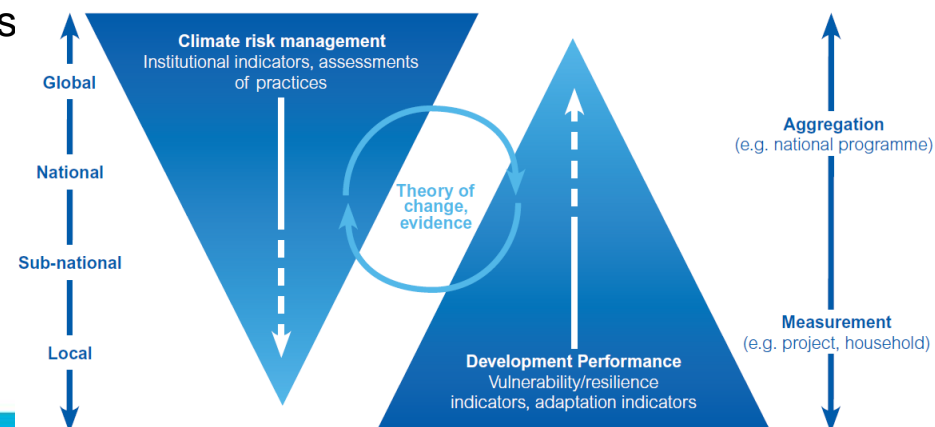


- TAMD can be used as a starting point or template for developing national adaptation evaluation frameworks tailored for different country contexts.
- Used at project and national levels in Cambodia, Kenya, Mali, Senegal, Tanzania, Zanzibar (...)

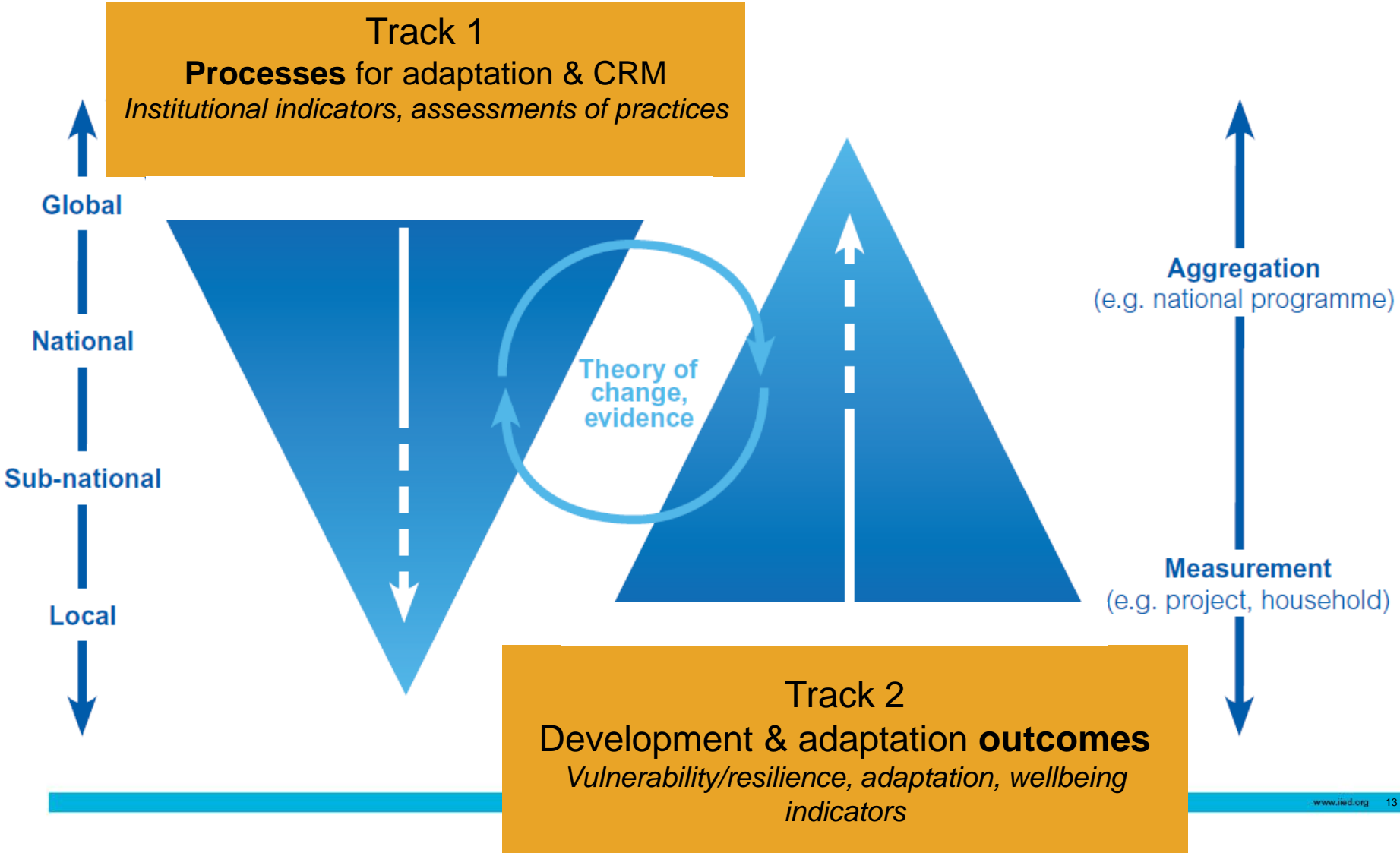
Approach: Tracking Adaptation & Measuring Development (TAMD)

TAMD provides a framework to integrate the use of multiple tools in assessing adaptation success.

- Going beyond indicators to measure processes, outcome and impact indicators across scales
- Two tracks: measuring processes & measuring outcomes for resilience
- TAMD is flexible & non-prescriptive – framework works at all levels
- Offers methodology for suggested indicators
- Assessing contribution, not attribution



The TAMD framework: tracking processes and outcomes



Using TAMD in Devolved Climate Finance mechanisms: Linking local outcomes and national systems

(Part 2)

The Devolved Climate Finance (DCF) mechanism

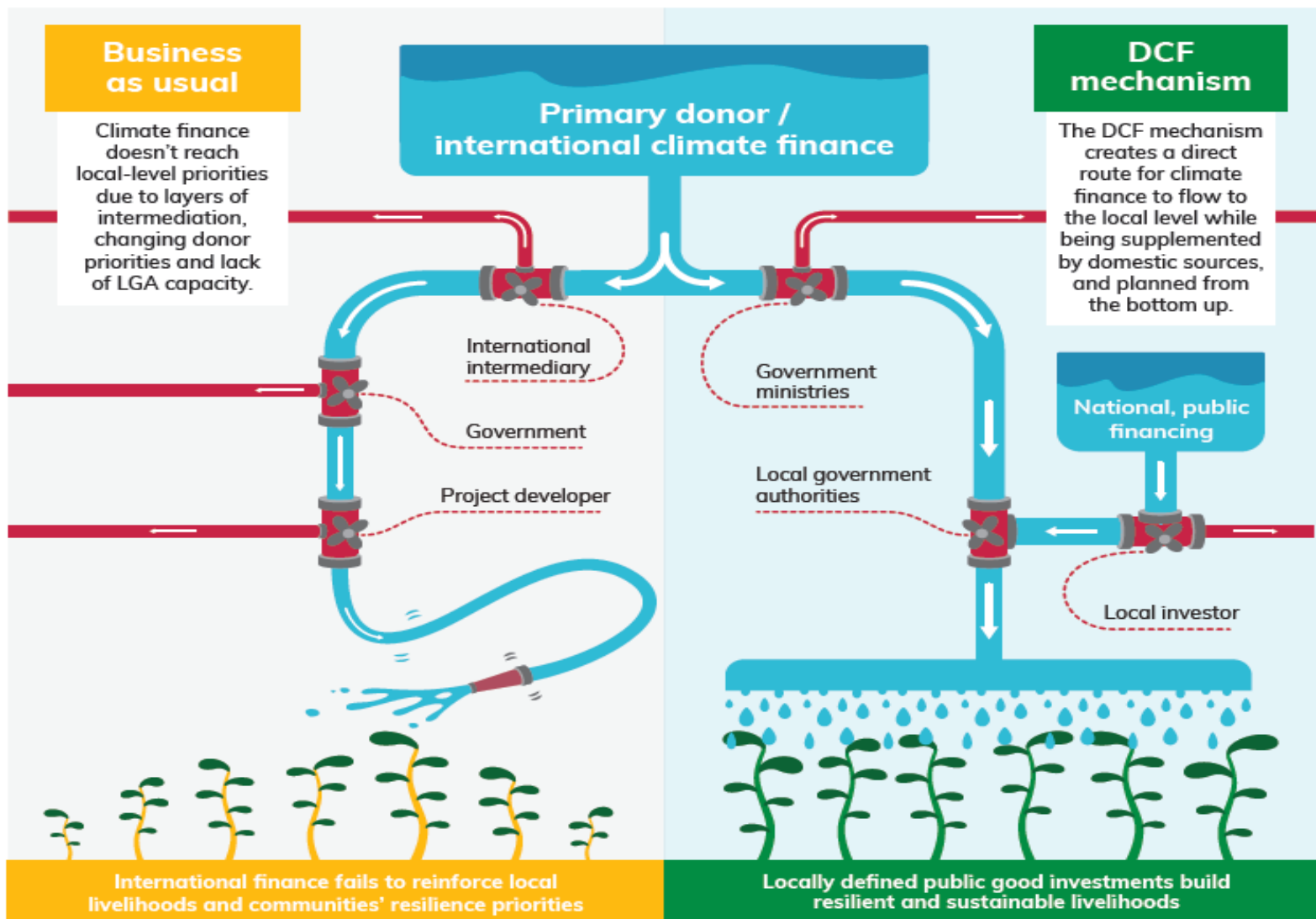
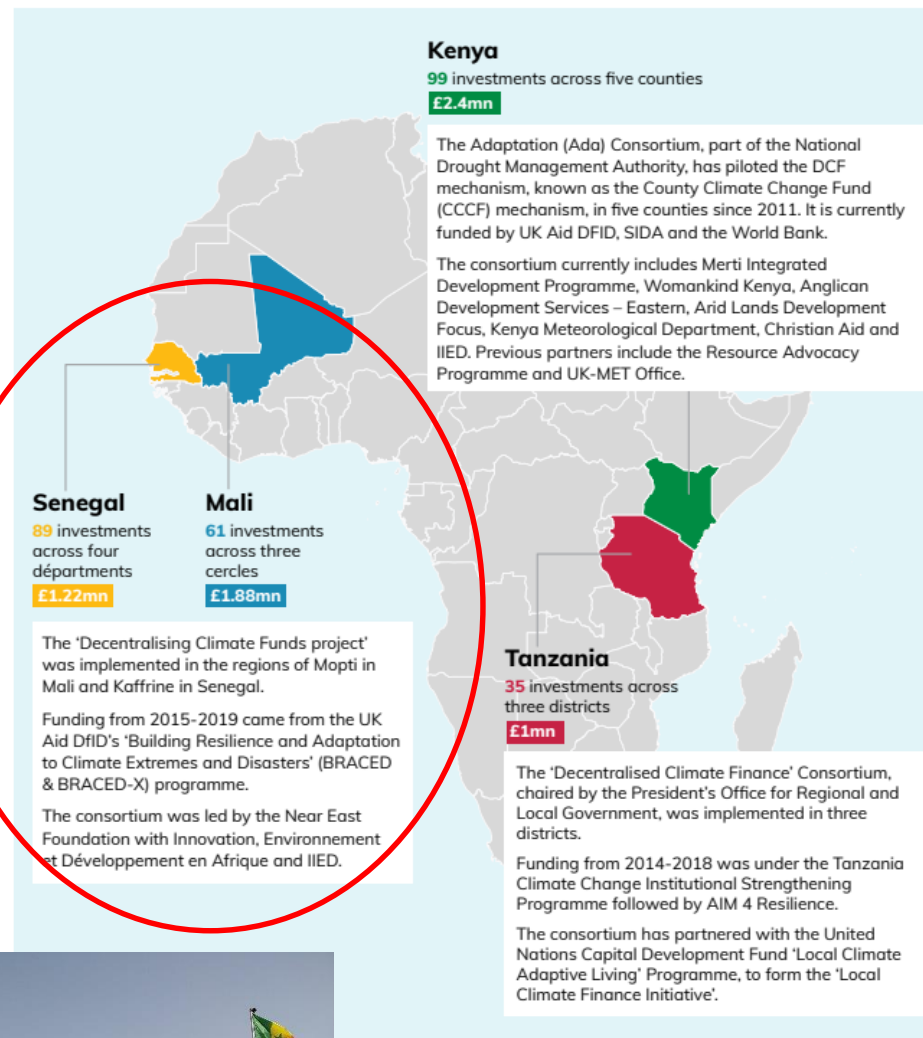
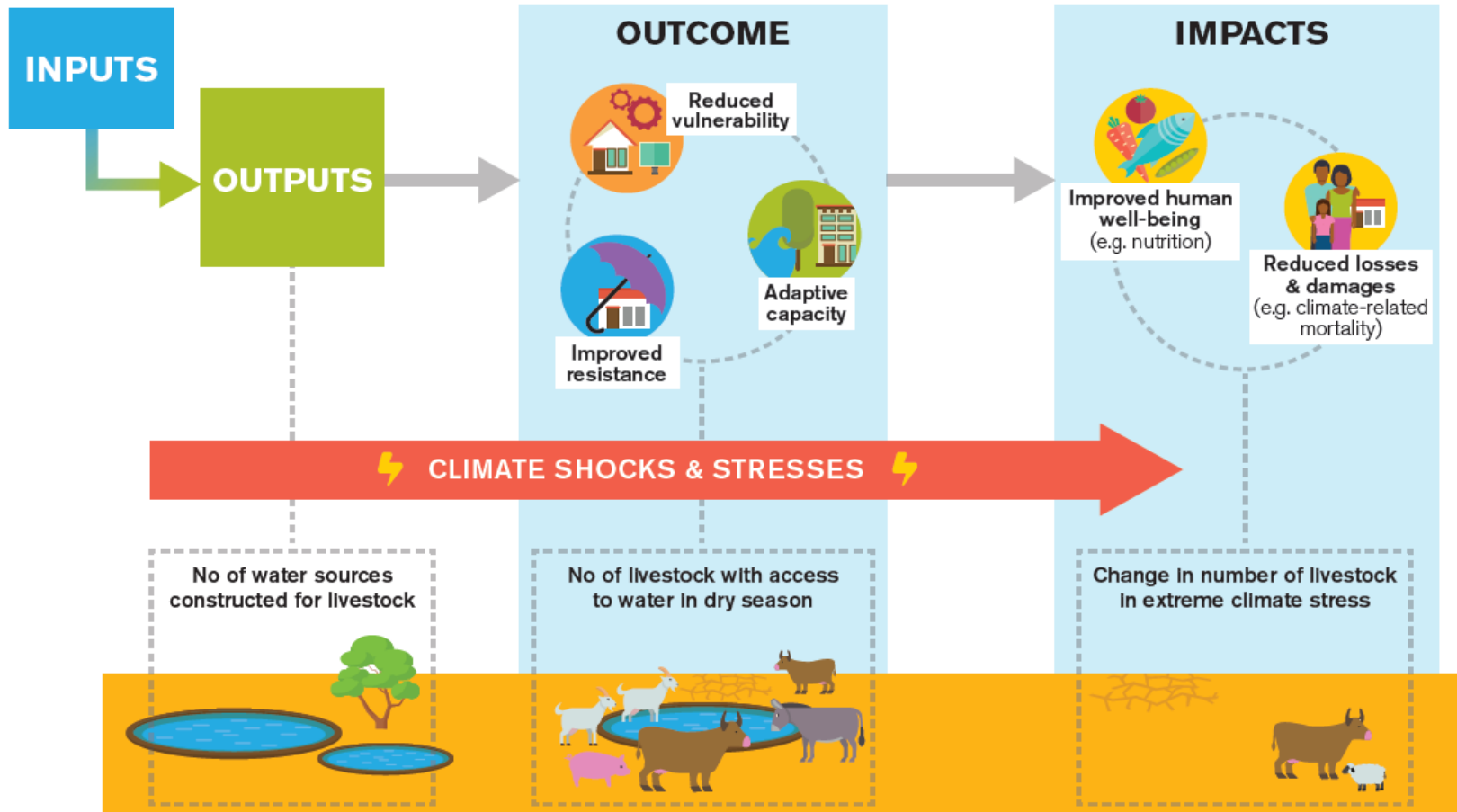




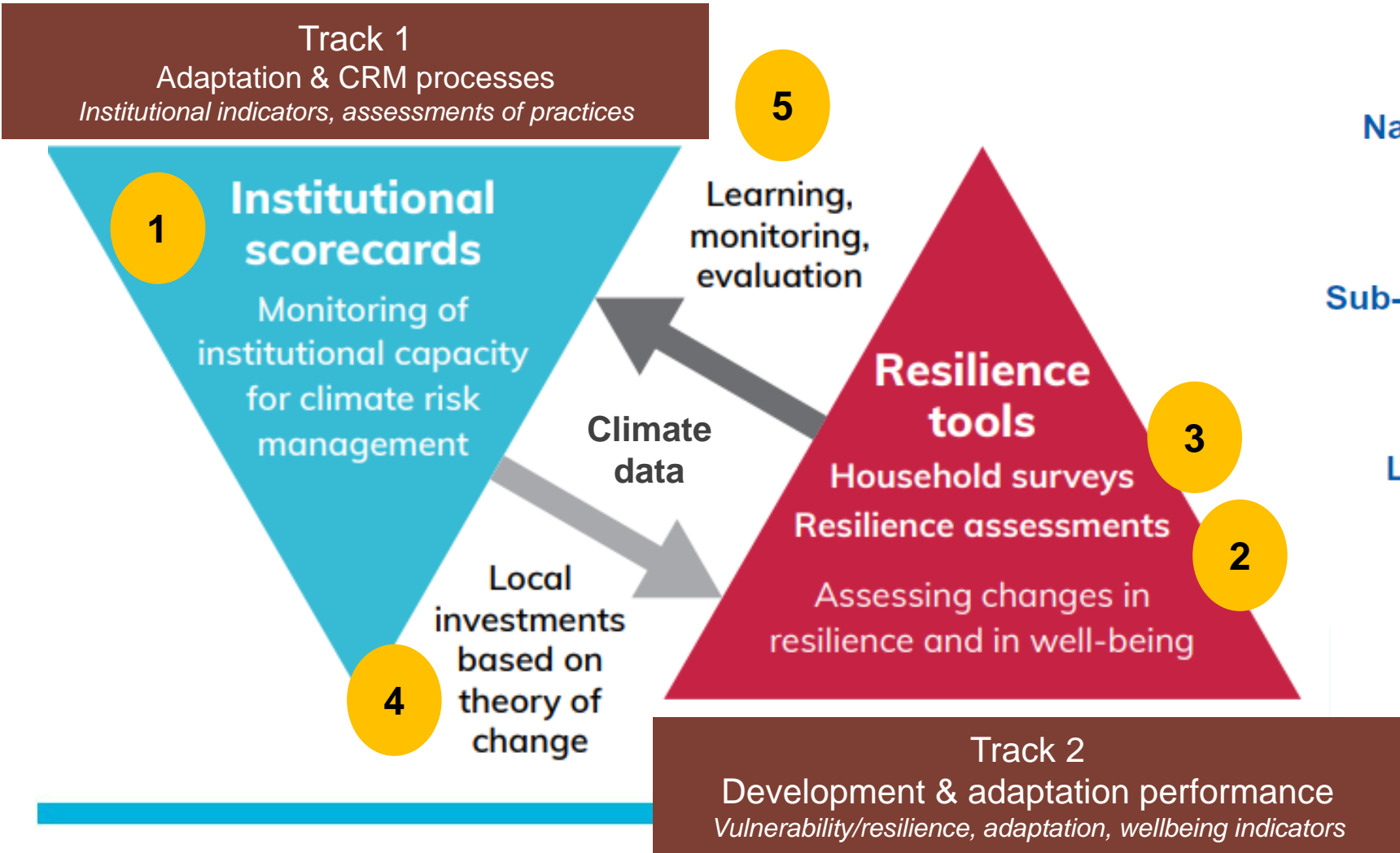
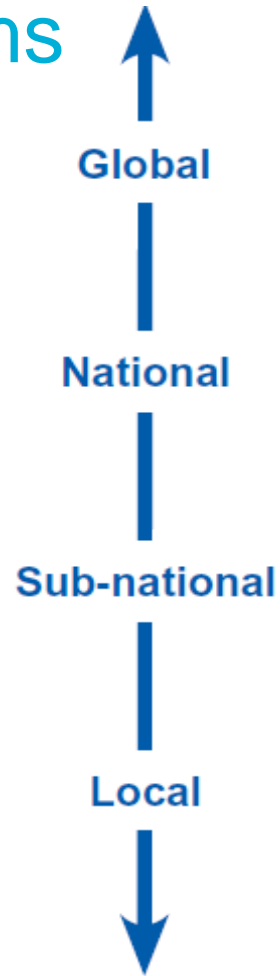
FIGURE 2. KEY FACTS - THE DCF MECHANISM ACROSS FOUR COUNTRIES



A view of local adaptation outcomes & impacts



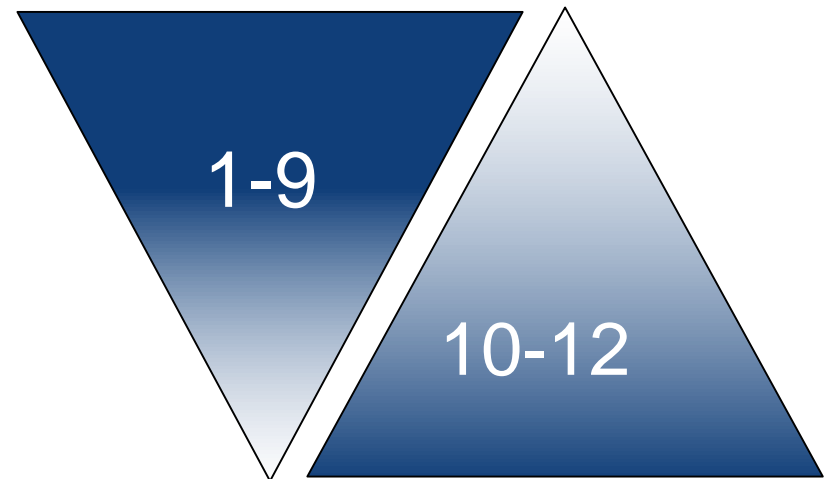
The TAMMD framework for DCF: linking local outcomes and national systems



Suggested indicators

TRACK 1

1. Climate change mainstreaming/integration into planning (T1)*
2. Institutional coordination for integration (T1)*
3. Budgeting and finance (T1)*
4. Institutional knowledge/capacity (T1)*
5. Use of climate information (T1)*
6. Planning under uncertainty (T1)*
7. Participation (vertical and horizontal) (T1)*
8. Awareness among stakeholders (T1)*
9. Extent and quality of CRM measures (T1)



TRACK 2

10. Number of people/households with reduced vulnerability
11. Context-specific indicators of vulnerability, resilience, adaptive capacity
12. Development –linked indicators: food security, income, perceived well-being

Focus : institutional scorecards

Indicator 1. Climate change integration into planning Representation of strategies that address climate change in relevant planning documents & processes	No	Partial	Yes
1. Is there a climate change plan or strategy set out in a dedicated strategy document and/or embedded in the principal planning documents at the level being assessed (e.g. national, sector, ministry)?			
2. Is there a formal (e.g. legal) requirement for climate change (adaptation/mitigation) to be integrated or mainstreamed into development planning (cf requirement for EIA for certain activities/projects)?			
3. Have specific measures to address climate change (adaptation/mitigation) been identified and funded?			
4. Are climate-relevant initiatives routinely screened for climate risks?			
5. Is there a formal climate safeguards system in place that integrates climate risk screening, climate risk assessment (where required), climate risk reduction measures (identification, prioritisation, implementation), evaluation and learning into planning?			

Example TAMD indicator 1

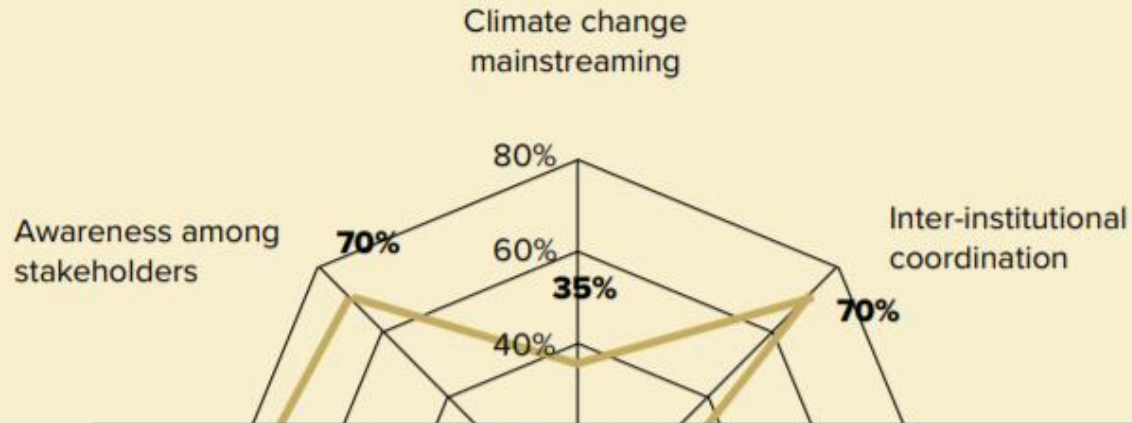
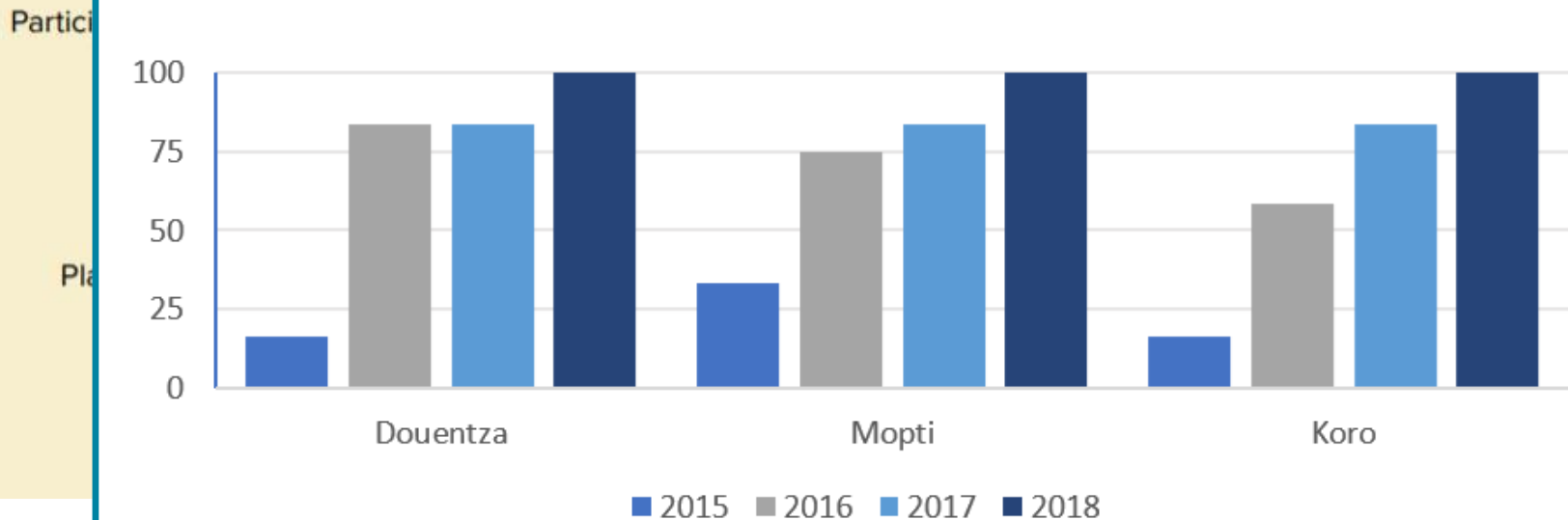


Figure 12 Inclusion of climate change in planning – results from Cercles in Mali



Lessons from TAMMD in DCF

- Important to adapt indicators – both for processes and outcomes - to be meaningful and inspire progress
- Social change takes time to unfold.. Many challenges, but changes do occur. Think of early pathways for impacts!
- Tensions between project and long-term approach need to be thought from onset, including linkages between local and national.
- Using methods accessible for local governments (e.g. scorecards) can lessen adaptation costs by informing government decisions in climate planning and climate risk

Thank you!

Emilie Beauchamp

International Institute for Environment and Development

Strategy & Learning Group

emilie.beauchamp@iied.org

References

Karani et al. 2015. Tracking Adaptation and Measuring Development: a manual for local planning. <https://pubs.iied.org/10133IIED/?k=tracking+adaptation+and+measuring+development&p=2>

Barret, S. 2014. Costs and values analysis of TAMD in Kenya. <https://pubs.iied.org/pdfs/10106IIED.pdf?>

Brooks & Fisher. 2014. Tracking Adaptation and Measuring Development: a step-by-step guide <https://pubs.iied.org/10100IIED/>

Brooks & al. 2013. An operational framework for Tracking Adaptation and Measuring Development (TAMD). <https://pubs.iied.org/pdfs/10038IIED.pdf?>

Brooks & al. 2019. Framing and tracking 21st Century climate adaptation, IIED. <https://pubs.iied.org/pdfs/10202IIED.pdf>

DCF Alliance. 2019. The devolved climate finance mechanisms: principles, implementation and lessons from four semi-arid countries. <https://pubs.iied.org/G04424/?p=1>

D'Errico e& al. 2020. Evaluation to connect national priorities with the SDGs. IIED. <https://pubs.iied.org/pdfs/17739IIED.pdf>

IIED 2019-2024 Strategy: <https://pubs.iied.org/pdfs/17703IIED.pdf>

More references on TAMD:

<https://www.iied.org/tracking-adaptation-measuring-development-tamd>

More references on Devolved Climate Finance:

<https://www.iied.org/decentralising-climate-funds-mali-senegal>

More...



Background paper for the Global Commission on Adaptation



ADAPTATION METRICS CURRENT LANDSCAPE AND EVOLVING PRACTICES

Lead Authors (listed alphabetically):

Tim Lister, Grantham Research Institute on Climate Change and the Environment, London School of Economics and Political Science (LSE)
Anne Olhoff, UNEP DTU Partnership, Technical University of Denmark

Contributing Authors (listed alphabetically):

Rima Al Azar, Food and Agriculture Organization of the United Nations
Vicki Barrnby, City of Melbourne
Dennis Bours, Independent Evaluation Office of the Global Environment Facility (IEG), and Technical Evaluation Reference Group of the Adaptation Fund (AF-TERG)
Viviane Wei Chen Clement, World Bank
Thomas William Dale, UNEP DTU Partnership, Technical University of Denmark
Craig Davies, European Bank for Reconstruction and Development
Hester Jacobs, Food and Agriculture Organization of the United Nations

Executive Summary

Effective adaptation assessment frameworks and metrics are essential for tracking and assessing climate change adaptation actions and progress. If used properly, adaptation metrics can enhance our understanding of what works and what does not work, why, and under which circumstances. Adaptation metrics are central to the learning process, as well as in guiding future adaptation efforts.

Although frameworks and metrics to track adaptation are still at the early stages of development and application, there is already sufficient knowledge to help guide future efforts. This paper highlights the following emerging lessons:

Start with the purpose, not the metrics. There is a tendency for the international debate to address adaptation metrics generically. However, the choice of metrics depends on the purpose and requires careful consideration of what one intends to measure or achieve, the types of decisions the metric will be used for (e.g., allocation of funding

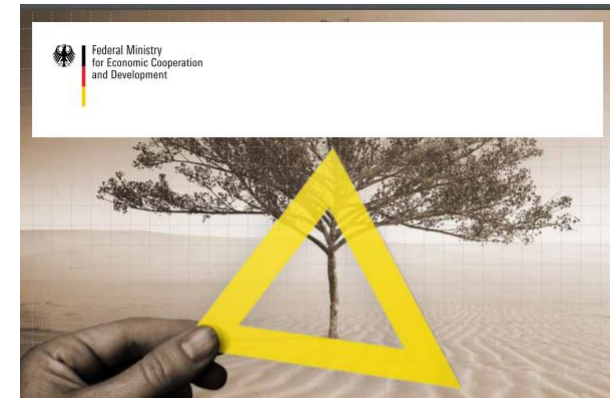
About this paper

This paper is part of a series of background papers commissioned by the Global Commission on Adaptation to inform its 2019 flagship report. This paper reflects the views of the authors, and not necessarily those of the Global Commission on Adaptation.

Suggested Citation: Lister, T., Olhoff, A., Al Azar, R., Barrnby, V., Bours, D., Clement, V.W.C., Dale, T.W., Davies, C., and Jacobs, H. 2019. "Adaptation metrics: current landscape and evolving practices". Rotterdam and Washington, DC: Available online at www.gca.org



Emilie Beauchamp
June 2 2020



Developing national adaptation monitoring and evaluation systems: A guidebook

Published by **giz** Deutsche Gesellschaft für Internationale Zusammenarbeit (GIZ) GmbH

In cooperation with **IISD** International Institute for Sustainable Development